



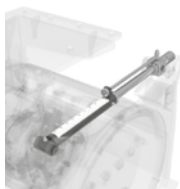
ROAD LINE **CPB**

# SWINGING PLANER FOR EXCAVATOR ARM



## CONSTANT MILLING DEPTH ADJUSTMENT WITH TELESCOPIC SCREW

hydraulic adjustment  
on request



OSCILLATING ARM  
SUPPORT TO BE  
ABLE TO MILL  
HORIZONTALLY,  
VERTICALLY OR  
AT AN ANGLE

WIDE RANGE OF  
PRODUCTS FOR  
APPLICATIONS  
ON DIFFERENT  
MACHINES



The swinging planers are designed to carry out **road maintenance work, to remove** a layer of **asphalt** to replace it or to carry out subsequent **excavations**. They also make it possible to **reuse the removed material** for the subsequent filling of the excavation or for the restoration of the road surface itself.

The swinging planers **can work on horizontal, vertical and inclined surfaces**, applied to an excavator or to the rear arm of a backhoe loader.

The **swinging arm** is free to absorb, without the excavation



and its depth suffering, all the movements of the excavator arm or the back of the backhoe.

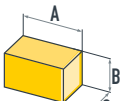
**Depth adjustment** is done manually by means of a telescopic screw which acts on the two sturdy slides. On request it is possible to have the hydraulic depth adjustment, which will need to be connected to an additional double-acting hydraulic line.

The **drum** is composed of **sturdy asphalt spikes** (on request it is possible to supply spikes for concrete or rock as an alternative).



Model	2 hydraulic lines		3 hydraulic lines	
	CPB 30.13	CPB 40.13	CPB 45.15	CPB 60.17

Technical data	um				
Working width	mm	300	400	450	600
Working depth standard drum	mm	0-125	0-125	0-150	0-170
Standard asphalt picks	n.	48	48	54	66
Oil flow min-max <sup>(1)</sup>	lt/min	45-80	45-80	90-140	120-160
Oil pressure min-max <sup>(1)</sup>	bar	170-240	170-240	170-300	170-300
Weight standard configuration	Kg	400	420	630	750
Minimum distance from the wall	mm	80			
Depth adjustment <sup>(2)</sup>		mechanical			
Tilting support rotation		135°			
Average milling speed (standard drum at 50% depth)	mt/min	0,5-3,0		0,7-4,5	
	ton	3,0-6,0	5,5-9,5	7,0-13,0	12,0-18,0
	ton	-	6,0-9,0	7,5-12,0	-

	Overall size in standard configuration	A cm	65	65	69	84
		B cm	83	83	86	89
		C cm	88	88	92	95

<sup>(1)</sup>The pressure and flow of the hydraulic system oil shall be inversely proportional to each other | <sup>(2)</sup>Hydraulics optional