

# ZCC26



**ZOOMLION**

**4.0**  
PRODUCTS

Vision Creates Future

---

## **CONTENTS**

---

<b>ZCC2600</b>	<b>Technical Highlights</b>	<b>01 - 02</b>
<b>ZCC2600</b>	<b>Dimensions</b>	<b>03</b>
<b>ZCC2600</b>	<b>Transport dimensions and weights</b>	<b>04 - 07</b>
<b>ZCC2600</b>	<b>Boom combination</b>	<b>08</b>
<b>ZCC2600</b>	<b>Technical description</b>	<b>09</b>
<b>ZCC2600</b>	<b>Self assembly system</b>	<b>10</b>
<b>ZCC2600</b>	<b>Erecting of boom to working position</b>	<b>11</b>
<b>ZCC2600</b>	<b>Lifting performance</b>	<b>12 - 24</b>

---





**EFFICIENT, QUICK AND SAFETY**

- The mechanism operating speed up 20%, and the speed of each mechanism don't slow down while operating 2 functions simultaneously;
- Time of erecting the whole crane is less than 6 hours;
- Omni-directional real-time LMI and monitoring system, to ensure safety operation.

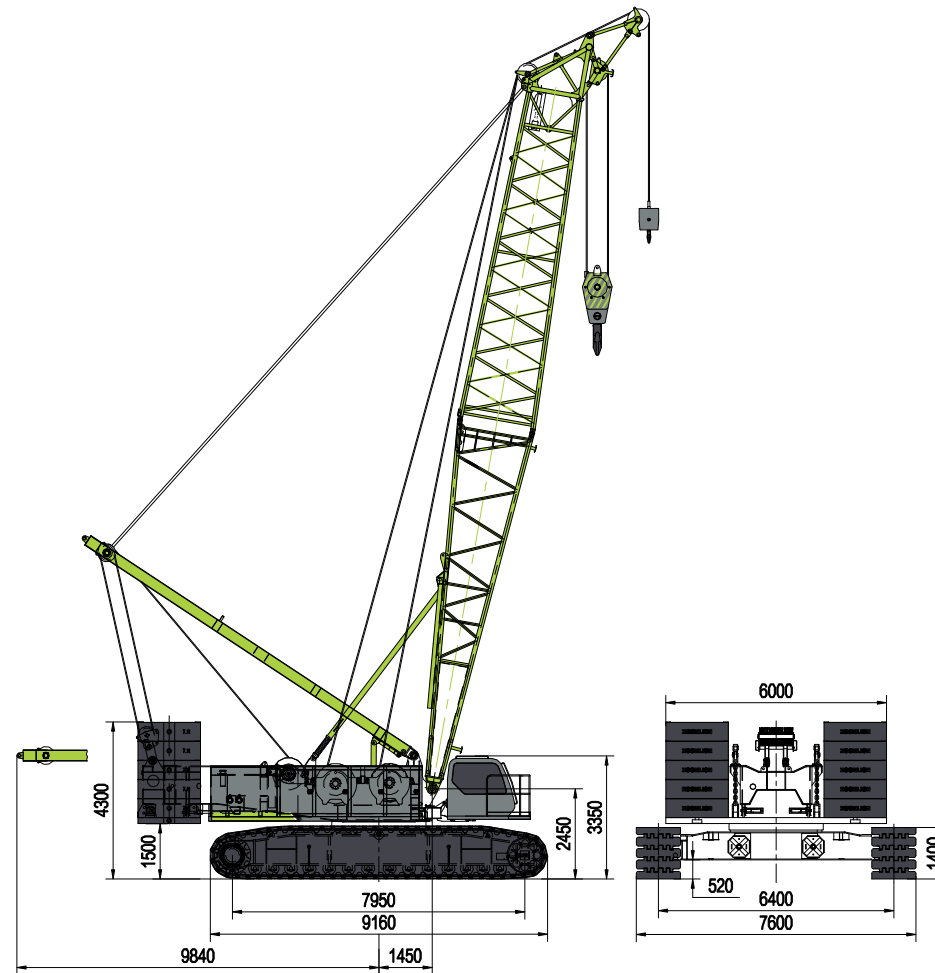
**CONVENIENT, COMFORTABLE AND INTELLIGENCE**

- The max. Single transport weight is 30.5t, transport width is 3m;
- Omni-directional vehicle information platform, real time monitoring equipment operation, The IOT intelligent interaction system make the mobile service come true.
- Full view cabin, buttons and switches are all within reach, all-around air conditioner form a comfortable operating space.



# DIMENSI NS

Basic machine with undercarriage



## Operating weight

The operating weight includes the basic machine with crawlers, 2 main winches including wire ropes (300m and 480m) and 20m main boom, consisting of A-frame, boom foot (10m), boom head (10m), 83.7t basic counterweight, 32t carbody counterweight, and 260t hook block.

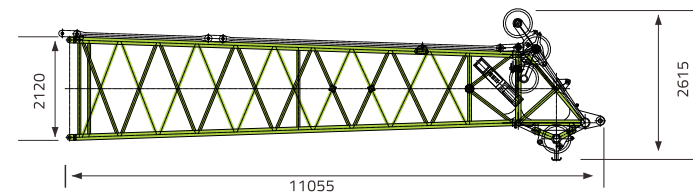
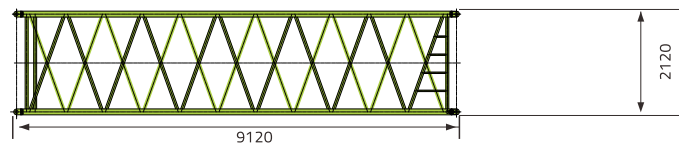
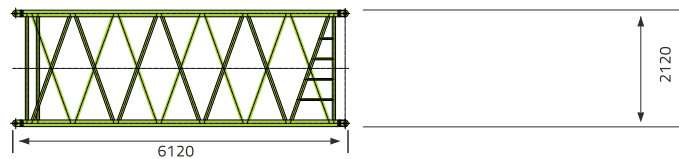
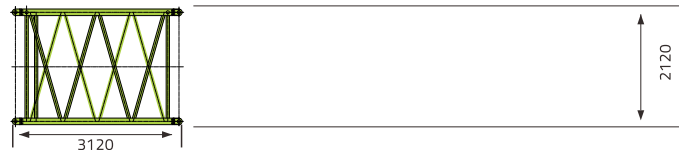
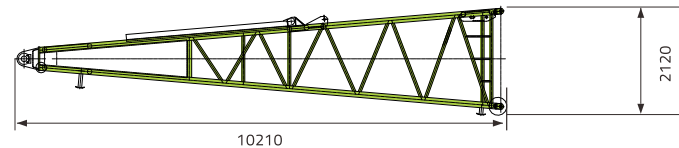
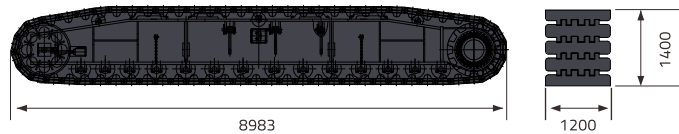
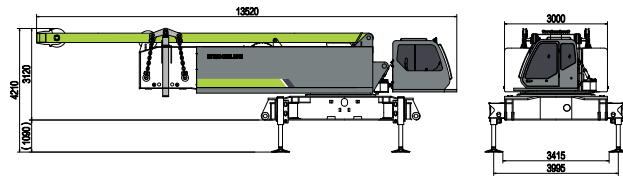
Total weight-----approx. 220t

## Equipment

Main boom max. length-----83m  
 High reach-----95m  
 Luffing jib max. length-----60m  
 Max. combination -----main boom 62m  
 -----luffing jib 60m  
 Fixed jib -----12-30m  
 Auxiliary jib 25t

# TRANSP RT DIMENSI NS AND WEIGHTS

## Basic machine and main boom



### Basic machine

Width	3000mm
Weight A (Without hoisting winch, main boom tilting-back support, A-frame and main boom derricking winch)	32000kg
Weight B (Without hoisting winch and main boom tilting-back support)	37500kg
Weight C (Including hoisting winch, main boom tilting-back support, A-frame and main boom derricking winch)	45500kg

### Crawler

2x

Track pads	1200mm
Width	1200mm
Weight	24500kg

### Boom foot

1x

Width	2365mm
Weight	3300kg

### 3m boom section

1x

Width	2320mm
Weight	850kg

### 6m boom section

1x

Width	2320mm
Weight	1400kg

### 9m boom section

6x

Width	2320mm
Weight	2000kg

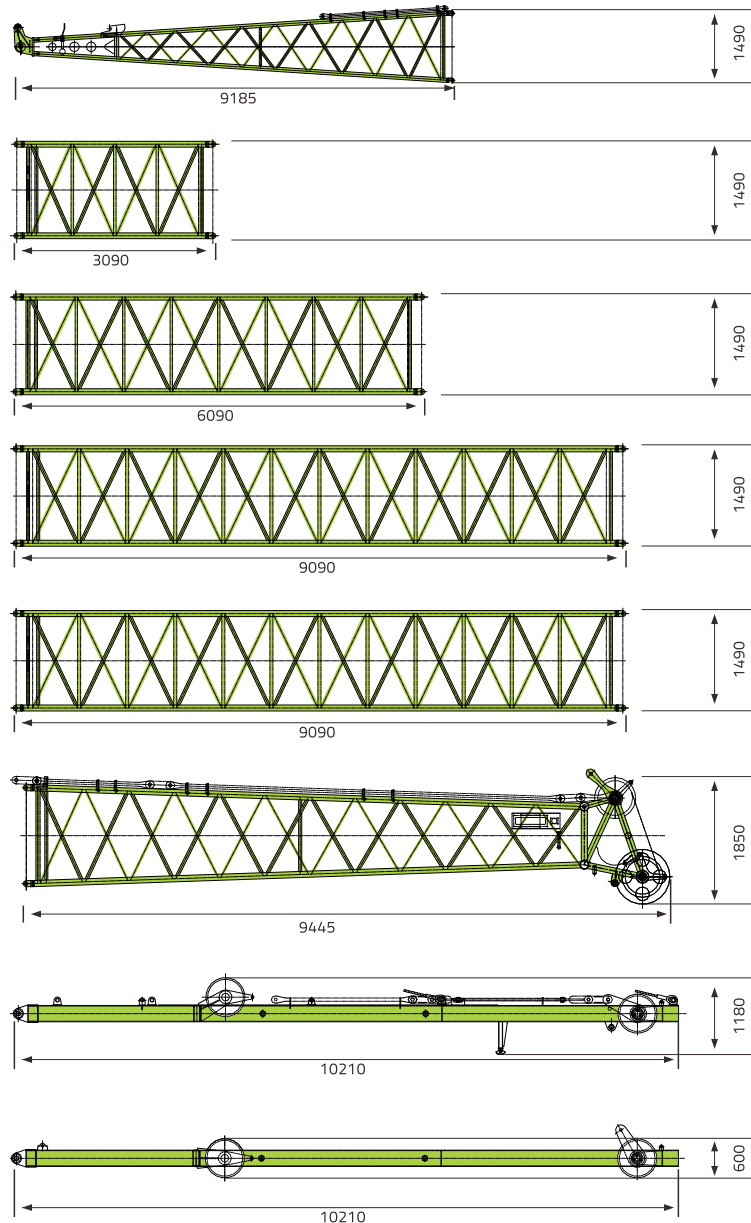
### Boom head

1x

Width	2320mm
Weight	3500kg

# TRANSP RT DIMENSI NS AND WEIGHTS

## Luffing jib



<b>Luffing jib foot</b>	<b>1x</b>
Width	1690mm
Weight	1100kg

<b>3m luffing jib section</b>	<b>1x</b>
Width	1690mm
Weight	370kg

<b>6m luffing jib section</b>	<b>2x</b>
Width	1690mm
Weight	660t

<b>9m luffing jib section</b>	<b>1x</b>
Width	1690mm
Weight	970kg

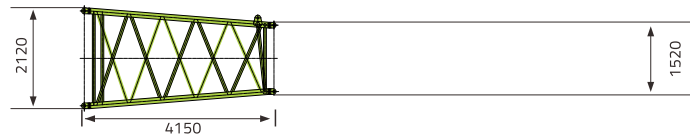
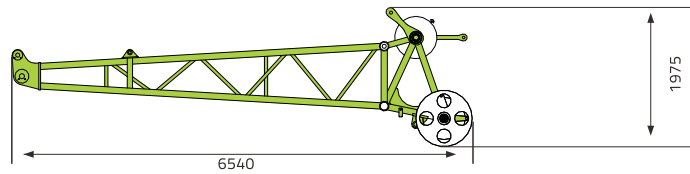
<b>9m luffing jib section B</b>	<b>2x</b>
Width	1690mm
Weight	830kg

<b>Luffing jib head</b>	<b>1x</b>
Width	1690mm
Weight	1100kg

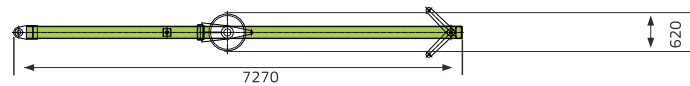
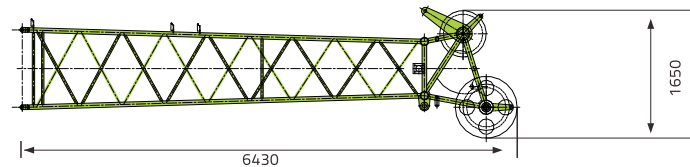
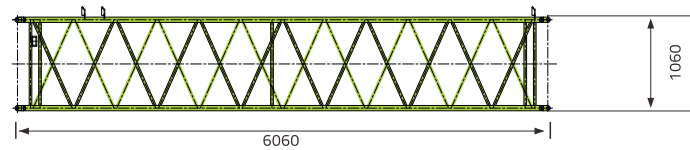
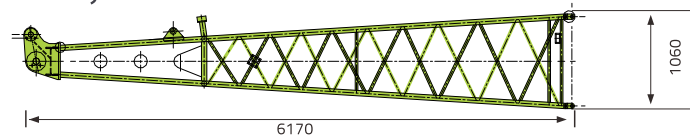
<b>WA-frame 2</b>	<b>1x</b>
Width	1750mm
Weight	1750kg
WA-frame 1 (width: 1385 mm) – 1.63 t × 1	

<b>WA-frame 1</b>	<b>1x</b>
Width	1385mm
Weight	1630kg

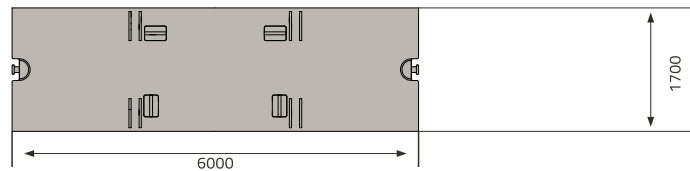
# TRANSP RT DIMENSIONS AND WEIGHTS



Fixed jib



Counterweight



## Heavy-duty fixed jib

1x

Width 1565mm

Weight 1000kg

## 4m L-beam section tapered

1x

Width 2320mm

Weight 1100kg

## Fixed jib head

1x

Width 1540mm

Weight 500kg

## 6m fixed jib section

3x

Width 1270mm

Weight 360kg

## Fixed jib head

1x

Width 1270mm

Weight 640kg

FA-frame (width: 1500 mm) – 0.75 t × 1

## FA-frame

1x

Width 1500mm

Weight 750kg

## Counterweight base plate

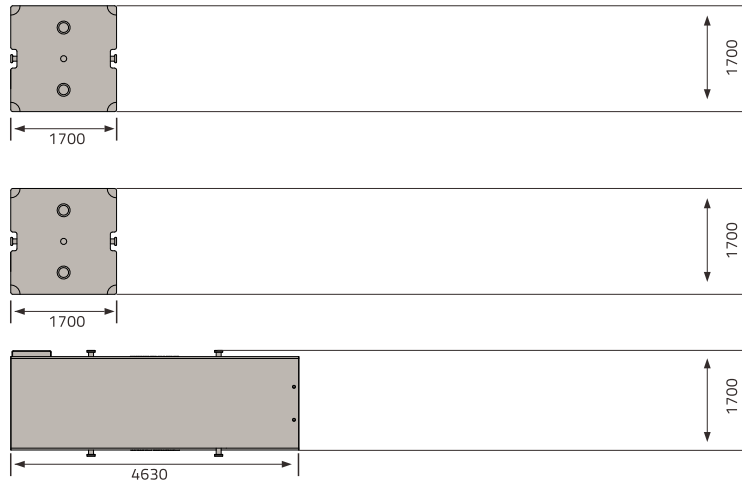
1x

Thickness 160mm

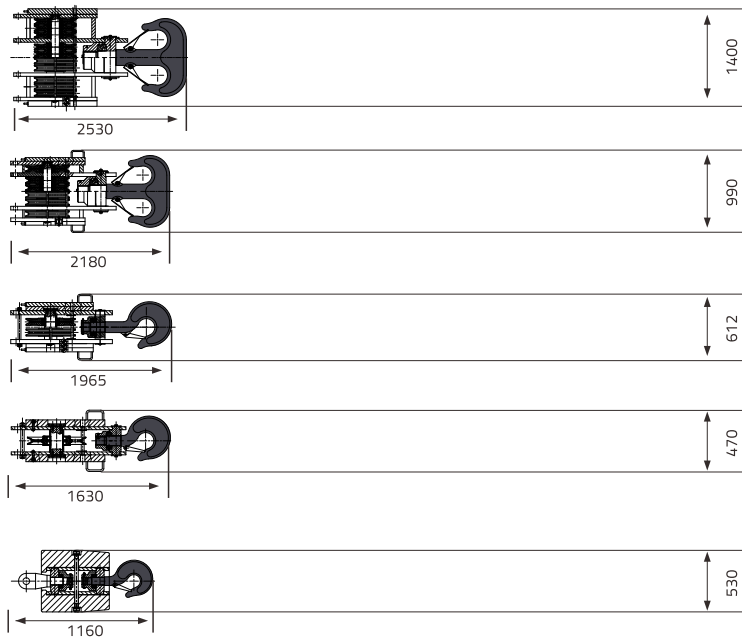
Weight 12700kg

Counterweight plate (thickness: 510 mm) – 7.1 t × 10

# TRANSP RT DIMENSI NS AND WEIGHTS



## Hooks



<b>Counterweight</b>	<b>1 x</b>
Thickness	510mm
Weight	710kg
Counterweight plate (thickness: 300 mm, TBM operating mode for options) – 4.0 t × 2	

<b>Counterweight for TBM operating mode</b>	<b>2x</b>
Thickness	300mm
Weight	4000kg
Central counterweight (thickness: 650 mm) – 16 t × 2	

<b>Carbody counterweight</b>	<b>2x</b>
Thickness	650mm
Weight	16000kg

<b>26 t hook blocks-1 sheaves</b>	<b>1x</b>
Weight	4230kg

<b>16 t/1 t hook blocks-6 sheaves</b>	<b>1x</b>
Weight	2780kg

<b>5 t hook blocks-2 sheaves</b>	<b>1x</b>
Weight	1700kg
30 t load hook – 1.08 t × 1	

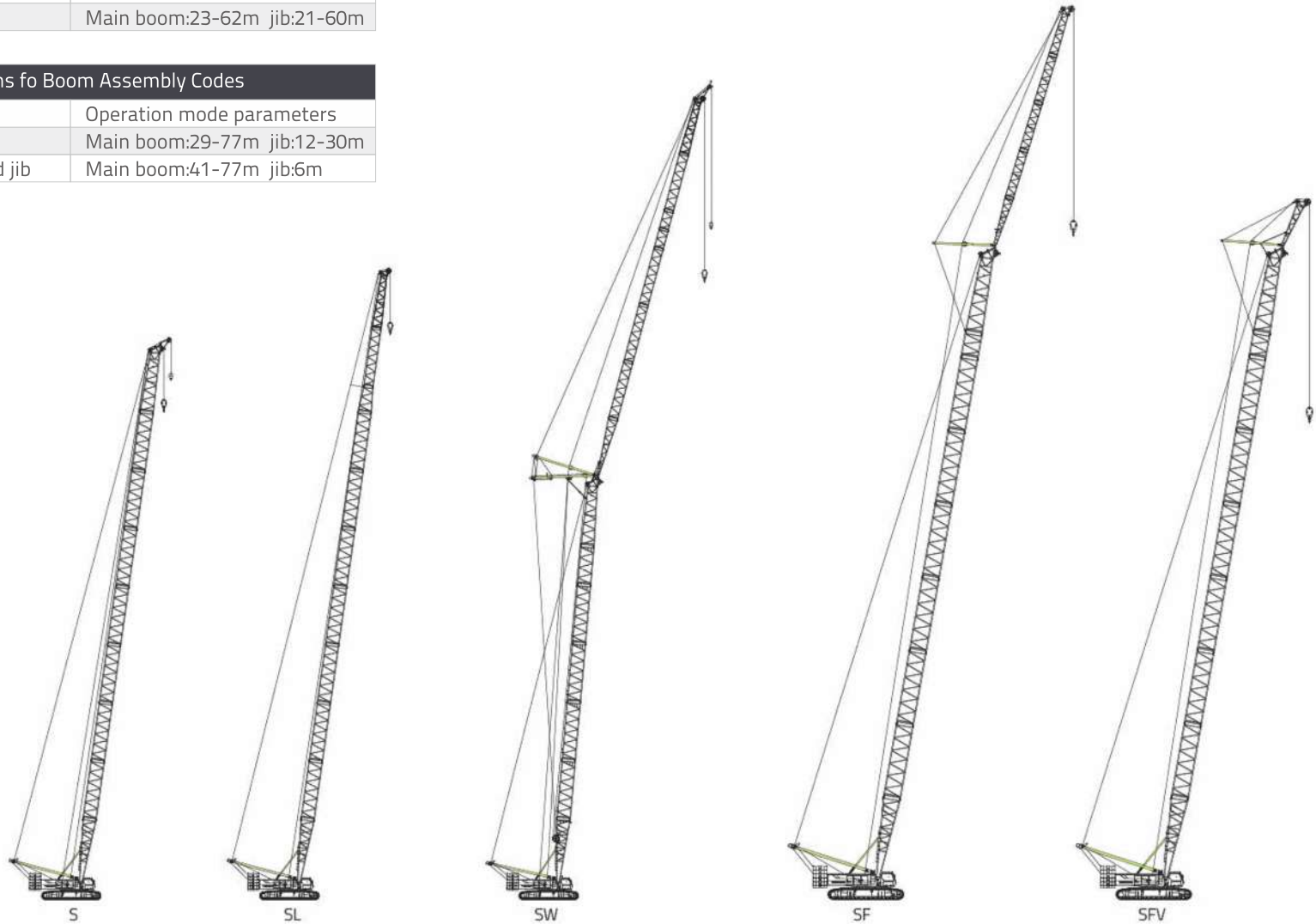
<b>3 t hook blocks-1sheave</b>	<b>1x</b>
Weight	1080kg

<b>16t single hook</b>	<b>1x</b>
Weight	530kg

## B M C MBINATI N

Descriptions fo Boom Assembly Codes		
Code	Type	Operation mode parameters
S	Heavy duty boom	20-83m
SL	Light dusy boom	86-95m
SW	Luffing jib	Main boom:23-62m jib:21-60m

Descriptions fo Boom Assembly Codes		
Code	Type	Operation mode parameters
SF	Fixed jib	Main boom:29-77m jib:12-30m
SFV	Heavy fixed jib	Main boom:41-77m jib:6m



# TECHNICAL DESCRIPTION



## Engine

Engine type—US Cummins QSL9-C305  
 Rated power —227 kw/2000 rpm  
 Maximum output torque —1505 Nm/1400 rpm  
 Fuel tank h— 700 L  
 Exhaust emission complies with U.S. EPA Tier 3 and EU Stage III A Emission Standards.



## Hydraulic system

The hydraulic system is composed of main pump, control valve, hydraulic motor, hydraulic oil tank, oil cooler and so on. World-class pump-control system and load sensing control system are applied in the hydraulic system. The main hydraulic elements are imported, which have the advantages of high efficiency, energy-saving, great reliability and long service life.

Oil cooler for hydraulic system: aluminium cooler, with the cooling fan driven by a motor

Working pressure—350bar

Hydraulic oil tank capacity— 700 L



## Hoisting winch

The crane is fitted with two hoisting winches: hoisting winch 1 and hoisting winch 2. Both of them are composed of built-in axial piston variable displacement motor, balance valve, reducer, normally closed brake as well as wire rope. They are controllable independently. The hoisting rope is imported rotation-resistant wire rope.

The hoisting winches have infinitely variable speed, which greatly improves the working efficiency.

### Main winch

Line pull-----max.150KN  
 Rope diameter-----28mm  
 Drum diameter-----650mm  
 Rope speed-----0-130m/min  
 Rope length-----480m

### Aux.winch

Line pull-----max.136KN  
 Rope diameter-----28mm  
 Drum diameter-----650mm  
 Rope speed-----0-120m/min  
 Rope length-----300m



## Boom winches

The derricking rope is imported non rotation resistant wire rope.

Line pull-----max. 102KN  
 Rope diameter-----24mm x2  
 Drum diameter-----540mm x2  
 Rope speed-----0-80m/min  
 Rope length-----440m x2



## Crawler

The dual variable displacement motor and dual reducer are outfitted on the travel gear.

The hydraulic motor, traveling reducer and traveling brake valve are all imported. Hydraulic chain tensioning device.

Track pads-----1200mm  
 Drive speed-----0-1.0km/h



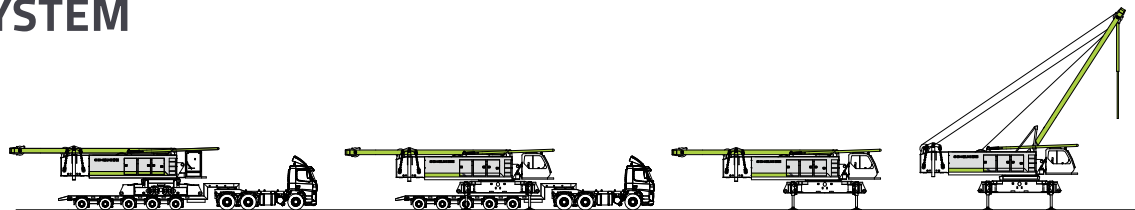
## Swing

The slewing mechanism consists of built-in axial piston dual variable displacement motor, dual gear reducer, normally closed slewing brake and pinion gear as well as slewing ring. The superstructure can realize 360° continuous rotation via slewing ring which is driven by the pinion gear.

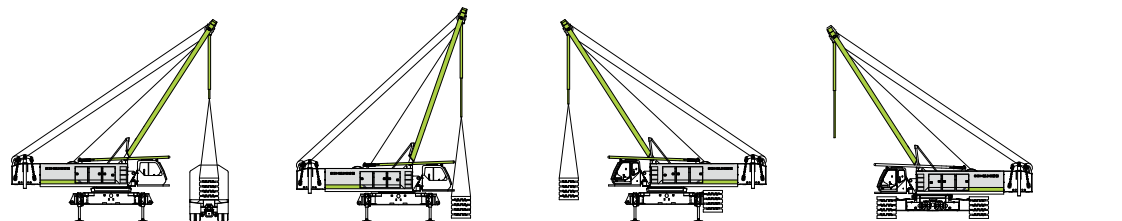
The application of closed hydraulic system and controllable free swing function can reduce the impacts on the crane and ensure that the slewing movements are initiated and stopped more stably.

Swing speed-----0-1.2r/min

# SELF ASSEMBLY SYSTEM



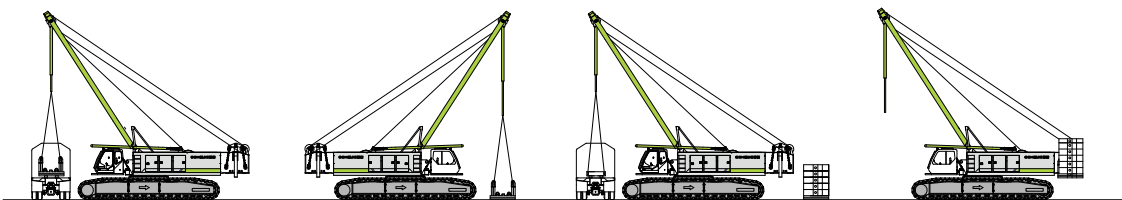
Unloading of basic machine



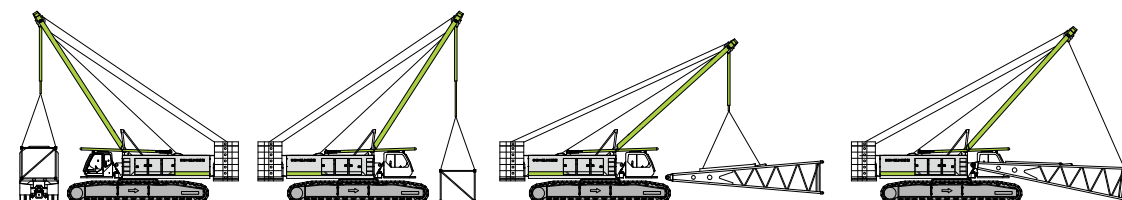
Unloading and assembly of crawler carrier



Unloading and assembly of central counterweight

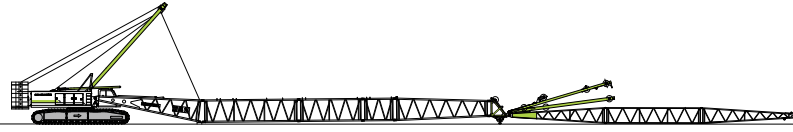


Unloading and assembly of rear counterweight

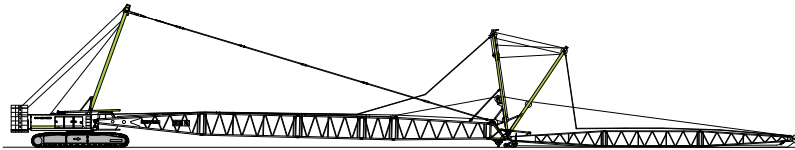


Unloading and assembly of frame

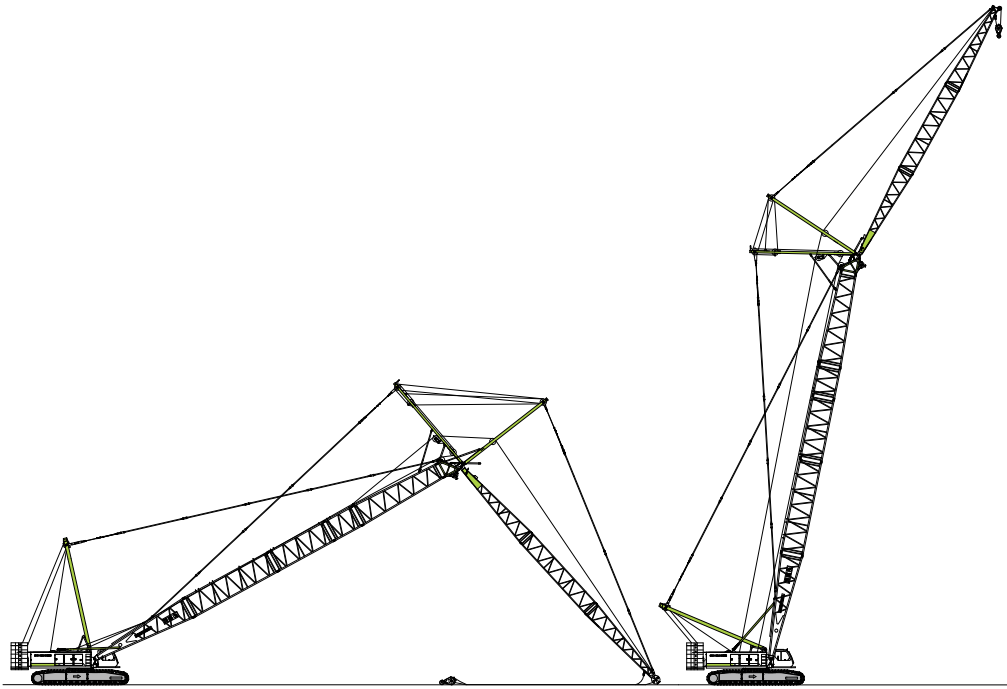
# ERECTING FB MT WORKING POSITION



Assembly of boom frame



Assembly of anchoring rods

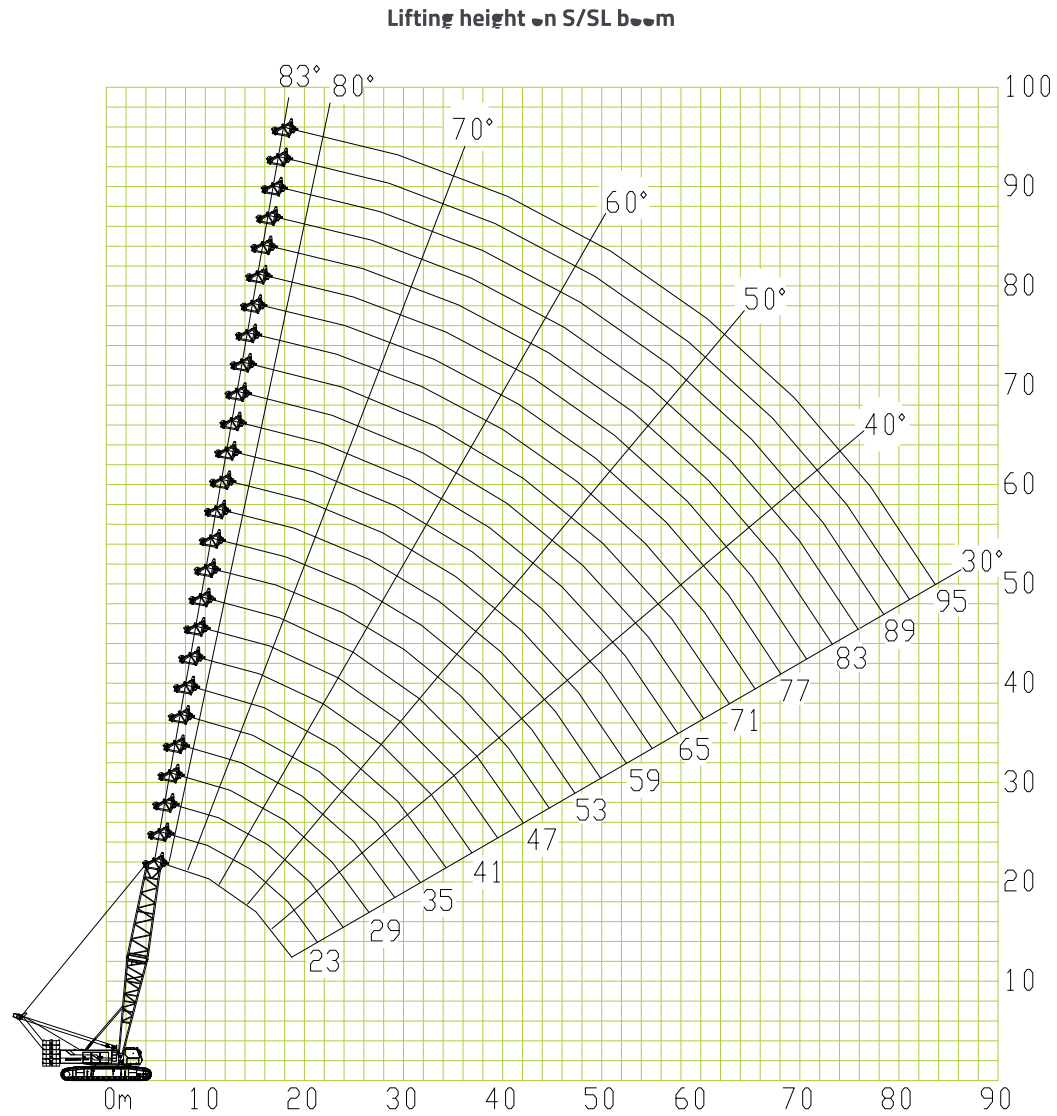


Boom in erecting position

Boom in working position

# LIFTING PERFORMANCE

Lifting performance on S/SL boom



# LIFTING PERFORMANCE

S-boom length (m)	Lifting capacity on S boom										
	20	23	26	29	32	35	38	41	44	47	50
Radius											
5	260										
6	227	200.8	193.1	184							
7	190.7	190.5	189	174	163	161					
8	175	166.6	164.5	162.5	158.4	149	149	135	118		
9	134.6	134.5	134.5	134.3	134.3	134.2	134.1	124	112	112	
10	132	130	128	125.9	123.9	121.9	121.9	119.8	110	110	102
12	102.9	102.7	102.5	102.2	102	101.6	99.5	97.5	97.5	95.5	93.4
14	83	83	82.8	82.6	82.5	82.2	82.1	82	81.3	81.3	79.2
16	69.1	69	68.8	68.7	68.7	68.5	68.5	68.4	68.4	68.3	68.3
18	59.1	59	58.9	58.7	58.6	58.6	58.6	58.6	58.6	58.6	58.5
20		51.5	51.4	51.4	51.4	51.4	51.4	51.2	51.1	51	50.8
22			45.6	45.6	45.5	45.5	45.4	45.3	45.1	45	44.8
24			40.7	40.7	40.7	40.6	40.4	40.3	40.2	40.1	39.9
26				36.6	36.6	36.6	36.5	36.4	36.2	36.1	35.9
28					33.2	33.2	33.1	32.9	32.8	32.7	32.6
30						30.3	30.3	30.2	30	29.9	29.6
32						27.9	27.7	27.6	27.5	27.4	27.2
34							25.6	25.5	25.3	25.2	24.9
36								23.5	23.4	23	22.8
38									21.7	21.4	21.1
40										20	19.4
42											18.3
44											
											16.7

S-boom length (m)	Lifting capacity on S boom										
	53	56	59	62	65	68	71	74	77	80	83
Radius											
10	98	86									
12	93.4	85	83	80	70	68	60.9	55.4	50.3		
14	79.2	77.2	77.2	70	69	66.5	59.2	53.8	49	43.2	39.4
16	67	67	67	65	65	64	57.4	52.2	47.4	41.9	38
18	58.3	58.2	58	57.2	56.6	55.9	54.8	50.4	44.7	40.6	36.8
20	50.7	50.5	50.3	50.2	49.4	48.9	48.4	47.7	43.4	39.4	35.8
22	44.6	44.5	44.4	44.1	43.8	43.3	42.7	42.1	41.5	38.1	34.5
24	39.8	39.5	39.4	39.3	39.1	38.5	38	37.4	37	36.5	33.4
26	35.7	35.6	35.4	35.2	34.8	34.5	34.2	33.6	33.2	32.6	32.1
28	32.4	32.2	31.8	31.5	31.2	30.8	30.5	30.1	29.7	29.3	28.9
30	29.5	29.2	28.8	28.4	28.1	27.8	27.3	27	26.7	26.3	25.9
32	26.5	26.5	26.1	25.8	25.3	25	24.6	24.4	23.9	23.6	23.3
34	24.5	24.2	23.8	23.5	23	22.7	22.4	21.9	21.6	21.3	21
36	22.5	22.1	21.7	21.4	21.1	20.6	20.3	20	19.6	19.2	18.9
38	20.5	20.3	20	19.5	19.2	18.9	18.5	18.1	17.8	17.4	17.1
40	19	18.7	18.3	18	17.7	17.2	16.9	16.6	16.1	15.8	15.5
42	17.6	17.2	16.9	16.6	16.1	15.8	15.5	15	14.7	14.4	14
44	16.3	15.9	15.6	15.2	14.8	14.5	14.1	13.8	13.4	13.1	13
46	15.1	14.8	14.4	14	13.7	13.3	12.9	12.6	12.4	12.2	12
48		13.7	13.4	12.9	12.6	12.3	11.8	11.7	11.5	11.3	11
50		12.7	12.4	11.9	11.6	11.3	11	10.9	10.7	10.5	10
52			11.4	11.1	10.7	10.3	10.3	10.1	9.9	9.7	9.3
54				10.2	9.9	9.5	9.1	9.4	9.2	8.9	8.5
56					9.1	8.9	8.8	8.7	8.5	8.2	8.2
58					8.4	8	8.3	8.1	7.9	7.6	7.3
60						7.4	7.7	7.5	7.3	7	6.6
62							7.2	7	6.8	6.5	6.2
64								6.5	6.3	6	5.6
66									5.7	5.8	5.5
68										5.2	5.1
70											4.7
72											
											3.8

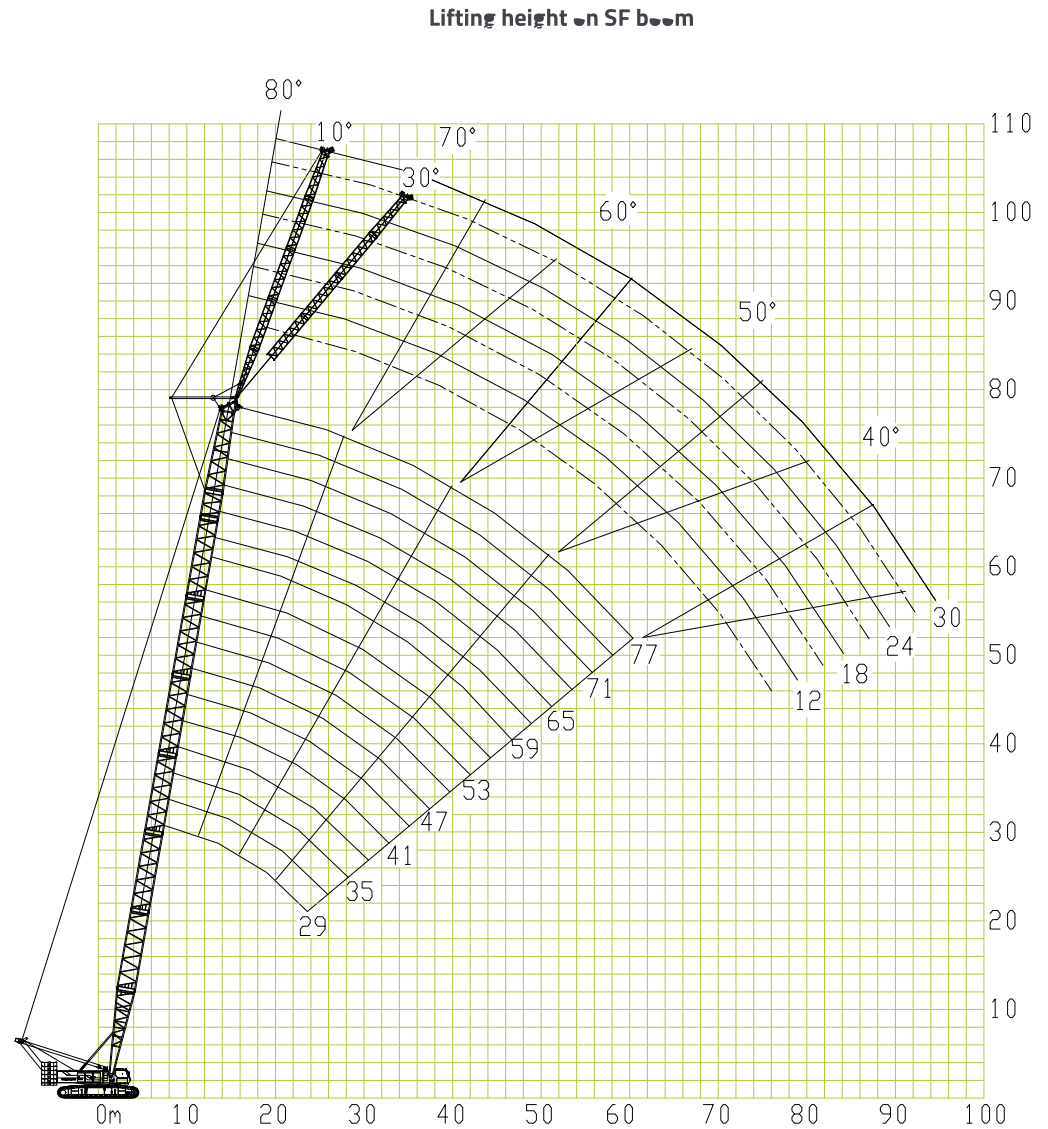
**NOTE:**

When tip boom is used, the lifting capacity on tip boom is the same as that on heavy duty boom at the same radius, but its max. lifting capacity should not exceed 25 t.

# LIFTING PERFORMANCE

Lifting performance on SF boom

SL-boom length (m)	Lifting capacity on SL boom			
	86	89	92	95
Radius				
16	30.9/16.3	28.1/16.9	25.3/17.4	
18	30	27.3	24.9	21
20	29.9	25.9	24	20.4
22	27.9	24.6	22.8	19.7
24	27	23.9	21.7	19
26	26.1	23	20.6	18
28	25.2	22	19.8	17
30	23.1	21	19.2	16
32	21.2	20.3	18.3	15.8
34	19.4	18.6	17.7	14.4
36	17.8	17.1	16.5	13
38	16.3	15.7	15.7	11.9
40	14.9	14.6	14.5	10.8
42	13.8	13.5	13.4	9.8
44	12.7	12.4	12.3	9
46	11.7	11.5	11.4	8.2
48	10.8	10.5	10.4	7.4
50	9.9	9.6	9.5	6.7
52	9.1	8.8	8.7	6
54	8.4	8.1	8	5.3
56	7.7	7.4	7.3	4.8
58	7.1	6.7	6.6	4.3
60	6.5	6.1	6	3.8
62	5.9	5.6	5.5	3.3
64	5.4	5.1	5	2.9
66	5	4.6	4.5	2.7
68	4.5	4	3.9	2.6
70	4.1	3.4	2.8	2.5
72	3.7	2.8	2.7	2.4
74	3.4	2.7	2.6	2.3
76		2.6	2.5	2.3
78		2.5	2.4	2.2
80			2.2	2.1
82				2



# LIFTING PERFORMANCE

F-jib angle (°)	10.0	30.0	10.0	30.0	10.0	30.0	10.0	30.0
S-boom length (m)	29.0							
F-jib length (m)	12.0		18.0		24.0		30.0	
Radius								
10	34/10.5							
12	33.0							
14	32.5		27.0					
16	32.0	28.8	26.8		18.2			
18	31.3	26.8	25.7	20.5	18.1		13.0	
20	30.7	25.6	24.9	20.1	17.8		12.9	
22	30.0	24.5	24.2	19.1	17.3	14.1	12.6	
24	29.0	23.4	23.4	18.3	16.9	14.0	12.5	
26	28.0	22.4	22.8	17.5	16.6	13.9	12.3	10.0
28	27.0	21.6	22.1	16.8	16.2	13.6	12.0	9.9
30	25.5	20.9	21.2	16.2	15.9	13.0	11.7	9.8
32	24.0	20.2	20.7	15.6	15.5	12.5	11.5	9.6
34	22.6	19.6	20.0	15.0	15.2	12.0	11.2	9.4
36	21.7	19.2	18.9	14.6	14.9	11.6	10.9	9.2
38		18.8	18.0	14.1	14.7	11.1	10.6	9.0
40			17.1	13.6	14.1	10.8	10.4	8.7
42			16.1	13.2	13.8	10.5	10.2	8.4
44				12.9	13.5	10.1	10.0	8.2
46					13.0	9.8	9.8	8.0
48					12.2	9.6	9.5	7.8
50						9.0	9.4	7.5
52							9.2	7.4
54							9.1	7.2
56								7.2

F-jib angle (°)	10.0	30.0	10.0	30.0	10.0	30.0	10.0	30.0
S-boom length (m)	38.0							
F-jib length (m)	12.0		18.0		24.0		30.0	
Radius								
14	32.5							
16	32.0	28.5	26.0					
18	31.3	28.1	24.9		17.8			
20	30.7	26.9	24.2	19.8	17.5		12.8	
22	30.0	25.9	23.5	19.5	17.1		12.5	
24	29.0	24.8	22.7	19.2	16.6	14.0	12.3	
26	28.0	23.9	22.2	18.4	16.3	13.9	12.0	
28	27.0	23.0	21.4	17.7	15.9	13.7	11.7	9.7
30	25.5	22.2	20.6	17.1	15.6	13.5	11.3	9.6
32	24.0	21.5	20.1	16.5	15.3	13.2	11.1	9.4
34	22.6	20.8	19.4	15.9	14.9	12.7	10.8	9.3
36	21.7	20.3	18.3	15.4	14.6	12.3	10.6	9.1
38	20.9	19.5	17.5	14.9	14.4	11.8	10.3	8.9
40	19.4	18.6	16.6	14.3	13.9	11.4	10.1	8.8
42	18.3	17.4	15.7	13.7	13.6	11.1	9.9	8.6
44	17.1	16.5	14.9	12.8	13.3	10.7	9.7	8.6
46		15.7	14.4	12.1	12.8	10.4	9.5	8.3
48			13.9	11.6	12.0	10.1	9.3	8.1
50			13.4	10.8	11.3	9.8	9.2	7.9
52				10.3	10.7	9.5	8.9	7.7
54					10.1	9.2	8.8	7.5
56					9.6	9.1	8.6	7.4
58						8.7	8.3	7.2
60							8.2	7.1
62							8.0	7.0
64								7.0

# LIFTING PERFORMANCE

F-jib angle (°)	10.0	30.0	10.0	30.0	10.0	30.0	10.0	30.0
S-boom length (m)	47.0							
F-jib length (m)	12.0		18.0		24.0		30.0	
Radius								
14	32.5							
16	32.0		25.2					
18	31.3	27.5	24.2		17.3			
20	30.7	27.1	23.5		17.0		12.4	
22	30.0	26.9	22.8	19.2	16.6		12.1	
24	29.0	26.0	22.0	18.9	16.2		11.9	
26	28.0	25.0	21.5	18.7	15.9	13.7	11.6	
28	27.0	24.2	20.8	18.3	15.5	13.5	11.3	
30	25.5	23.1	20.0	17.9	15.2	13.3	11.0	9.3
32	24.0	22.2	19.5	17.3	14.8	13.1	10.8	9.1
34	22.3	21.3	18.8	16.8	14.5	12.8	10.5	9.0
36	21.4	20.5	17.8	16.2	14.2	12.5	10.3	8.8
38	20.5	19.1	17.0	15.7	14.0	12.0	10.0	8.7
40	19.1	18.2	16.1	15.2	13.5	11.7	9.8	8.6
42	17.8	17.1	15.2	14.2	13.2	11.5	9.6	8.4
44	16.6	16.2	14.5	13.3	12.9	11.0	9.4	8.4
46	15.4	15.4	14.0	12.4	12.4	10.6	9.2	8.2
48	14.4	14.6	13.5	11.7	11.6	10.2	9.0	8.1
50	13.5	13.7	13.0	11.3	11.0	9.8	8.9	7.9
52	12.6	12.8	12.5	10.5	10.4	9.5	8.7	7.8
54		12.0	12.0	10.0	9.8	9.1	8.6	7.7
56			11.6	9.2	9.3	9.0	8.3	7.6
58			10.8	9.0	8.8	8.6	8.1	7.5
60				8.0	8.4	8.3	8.0	7.4
62					8.0	8.0	7.8	7.2
64					7.5	7.5	7.5	7.1
66						7.0	7.3	7.0
68							7.0	6.9
70							6.8	6.4
72								5.6

F-jib angle (°)	10.0	30.0	10.0	30.0	10.0	30.0	10.0	30.0
S-boom length (m)	56.0							
F-jib length (m)	12.0		18.0		24.0		30.0	
Radius								
16	32.0							
18	31.5		25.1					
20	30.9	27.0	24.2		16.8			
22	30.4	26.6	23.4		16.6		12.1	
24	28.3	26.5	22.7	18.9	16.4		12	
26	27.0	26.0	22.0	18.7	16.1		11.8	
28	26.3	23.5	21.4	18.6	15.8	13.5	11.5	
30	25.6	21.4	20.8	18.3	15.5	13.4	11.3	
32	24.8	19.5	20.2	18.1	15.2	13.2	11	9.2
34	23.5	18.6	19.7	17.8	15	13.1	10.8	9.1
36	21.6	18.1	19.2	17.1	14.7	12.9	10.5	8.9
38	19.9	17.6	18.7	15.8	14.4	12.8	10.3	8.8
40	18.4	17.2	17.9	14.7	14.2	12.6	10.2	8.6
42	17	16.8	17.0	13.7	13.5	12.4	9.9	8.6
44	15.8	16.2	16.2	12.7	12.6	12.1	9.7	8.4
46	14.7	15.1	15.1	12.5	11.8	11.9	9.5	8.3
48	13.7	14.0	14	12.1	11.1	11.4	9.3	8.3
50	12.7	13.0	13.1	11.9	10.4	10.8	9.2	8.1
52	11.9	12.1	12.2	11.6	9.8	10.2	9	8
54	11.1	11.3	11.4	11.4	9.2	9.6	8.9	7.8
56	10.4	10.6	10.7	11.1	9.0	9.0	8.7	7.7
58	9.7	9.9	10	10.4	8.8	8.6	8.4	7.7
60	9.1	9.2	9.4	9.7	8.6	8.0	8	7.5
62			8.8	9.1	8.5	7.6	7.5	7.4
64			8.3	8.5	8.3	7.3	7.1	7.4
66			7.7	7.9	8	7.2	6.8	7.1
68					7.5	7.1	6.5	6.7
70					7	7.0	6	6.4
72					6.6	6.5	5.5	6
74							5	5.6
76							4.4	5
78							3.6	4.4

# LIFTING PERFORMANCE

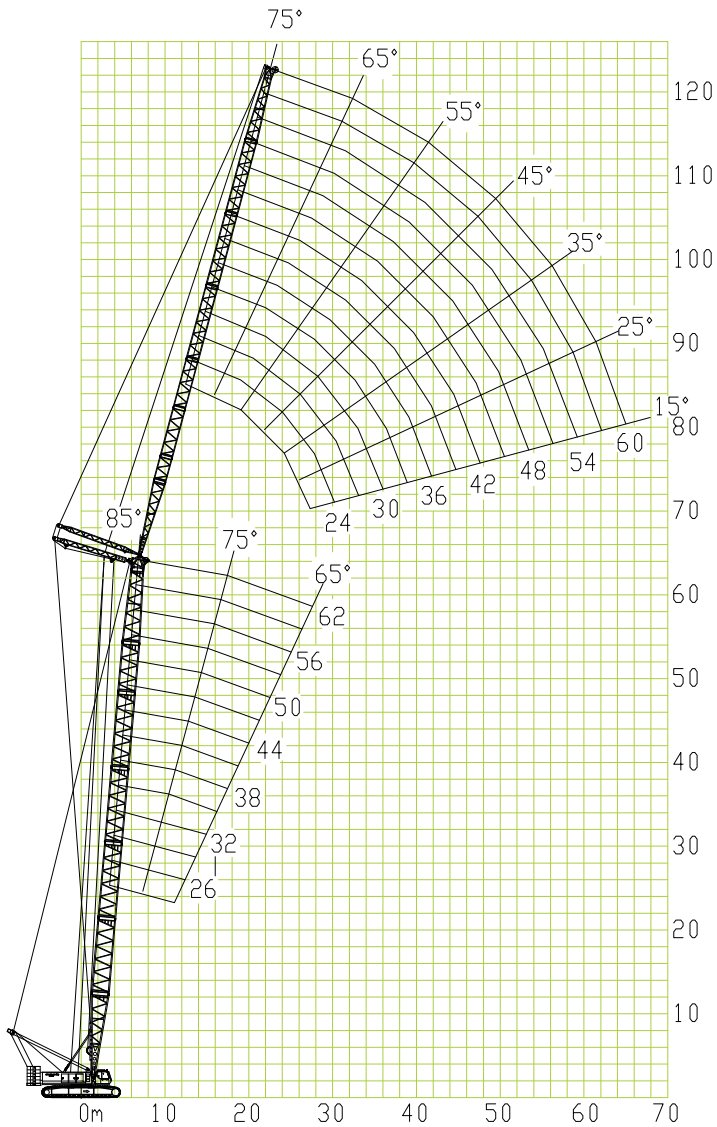
F-jib angle (°)	10.0	30.0	10.0	30.0	10.0	30.0	10.0	30.0
S-boom length (m)	71.0							
F-jib length (m)	12.0		18.0		24.0		30.0	
Radius								
18	32.0							
20	31.8		25.3					
22	30.4	27.0	24.5		17.7			
24	27.5	26.5	23.8		17.1			
26	27.0	25.3	23.2	18.9	16.7		12.1	
28	26.3	22.9	22.5	18.7	16.1		12	
30	25.8	21.1	21.8	18.6	15.6	13.5	11.7	
32	24.5	20.5	21.0	18.5	15.3	13.4	11.5	
34	22.3	19.9	19.8	17.9	15.5	13.3	11.3	9.2
36	20.4	19.4	19.2	16.5	16.2	13.2	11.1	9.1
38	18.7	19.0	18.8	15.2	16.5	13.1	10.8	9
40	17.2	17.8	17.6	14.4	16.2	12.9	10.7	8.9
42	15.8	16.4	16.2	14.0	16	12.9	10.5	8.8
44	14.6	15.1	15	13.7	15.3	12.6	10.3	8.6
46	13.4	14.0	13.8	13.4	14.2	11.7	10.1	8.6
48	12.4	12.9	12.8	13.1	13.1	10.9	9.9	8.5
50	11.5	11.9	11.9	12.6	12.2	10.2	9.8	8.4
52	10.6	11.0	11	11.7	11.3	9.5	9.2	8.3
54	9.8	10.2	10.2	10.8	10.5	8.9	8.6	8.3
56	9.1	9.5	9.5	10.0	9.8	8.4	8.1	8.1
58	8.4	8.8	8.8	9.3	9.1	7.9	7.7	8
60	7.8	8.1	8.2	8.6	8.4	7.7	7.2	7.7
62	7.2	7.5	7.6	8.0	7.8	7.6	6.8	7.3
64	6.7	6.9	7	7.4	7.2	7.6	6.4	6.8
66	6.1	6.4	6.4	6.8	6.6	7.4	6	6.5
68	5.6	5.8	5.8	6.2	6	7.3	5.6	6.1
70	5	5.2	5.3	5.6	5.5	6.7	5.3	5.7
72	4.6	4.7	4.8	5.1	5	6.2	5	5.4
74	4.3	4.3	4.4	4.6	4.6	5.8	4.7	5.1
76			4.1	4.3	4.3	5.3	4.4	4.8
78			3.9	4.0	4	4.9	4.1	4.4
80				3.7	3.8	4.4	3.8	4.2
82					3.5	4.1	3.6	3.9
84					3.3	3.7	3.3	3.7
86						3.4		3.5
88								3.2

F-jib angle (°)	10.0	30.0	10.0	30.0	10.0	30.0	10.0	30.0
S-boom length (m)	77.0							
F-jib length (m)	12.0		18.0		24.0		30.0	
Radius								
20	32.0							
22	31.8		25.0					
24	30.4	22.7	24.2		14.3			
26	27.5	22.4	23.6		13.9		8.3	
28	27.0	22.1	23.0	16.2	13.6		8.0	
30	26.0	21.6	22.4	16.1	13.3		7.8	
32	23.9	21.0	22.0	15.8	13.0	9.5	7.5	
34	21.8	20.4	21.5	15.7	12.7	9.4	7.4	
36	19.9	19.9	20.4	15.5	12.4	9.2	7.1	6.9
38	18.2	19.4	18.6	15.2	12.1	9.0	6.7	6.8
40	16.7	17.9	17.1	14.8	11.9	8.9	6.5	6.7
42	15.3	16.3	15.7	14.4	11.6	8.8	6.4	6.7
44	14.1	15.0	14.5	14.0	11.4	8.6	6.1	6.5
46	12.9	13.8	13.3	13.8	11.2	8.5	6.0	6.5
48	11.9	12.6	12.3	13.4	10.9	8.4	5.9	6.4
50	11	11.6	11.4	12.2	10.7	8.3	5.8	6.3
52	10.1	10.7	10.5	11.2	10.4	8.2	5.5	6.3
54	9.3	9.8	9.7	10.4	10	8.0	5.4	6.2
56	8.6	9.0	9	9.6	9.2	8.0	5.3	6.1
58	7.9	8.3	8.3	8.9	8.4	7.9	5.2	6.1
60	7.3	7.6	7.6	8.1	7.7	7.8	5.0	6.1
62	6.7	7.0	6.9	7.5	7.1	7.7	4.9	5.6
64	6	6.4	6.3	6.8	6.5	7.7	4.8	5.1
66	5.5	5.8	5.7	6.2	5.9	7.3	4.7	4.7
68	4.9	5.2	5.1	5.6	5.3	6.8	4.6	4.3
70	4.5	4.7	4.6	5.0	4.8	6.2	4.6	3.9
72	4.2	4.2	4.3	4.6	4.4	5.8	4.4	3.5
74	3.9	3.8	4	4.3	4.2	5.3	4.3	3.4
76	3.6	3.4	3.7	4.0	3.9	4.8	4.2	3.4
78	3.3	3.0	3.4	3.7	3.6	4.4	4.2	3.4
80		2.6	3.0	3.2	3.4	4.0	4.0	3.2
82			2.6	2.9	3.1	3.6	3.6	3.2
84			2.3	2.5	2.8	3.2	3.2	3.2
86				2.2	2.5	2.9	3.0	3.2
88					2.2	2.5	2.6	3.1
90					2.0	2.2	2.4	2.8
92						1.9	2.0	2.4

# LIFTING PERFORMANCE

## Lifting height on SW boom

Lifting height on SW boom



S-boom length(m)	29																	
W-jib length(m)	27			33			39			45			51			60		
S-boom angle	85°	75°	65°	85°	75°	65°	85°	75°	65°	85°	75°	65°	85°	75°	65°	85°	75°	65°
Radius(m)																		
14	68.1			57.3														
16	62.5			54			41.9											
18	57.2			50.3			40.8			31.2								
20	53.3			47			39.7			29.8			22.3					
22	48.8			43.9			38.3			29.1			21.7			12		
24	44.1	42.1		40.9			37			28.6			21.1			11.4		
26	40	38.4		37.9	38		35.4			27.5			20.5			11		
28	33.1	35.1		34.3	34.9		33.6	32.5		26.9			20.1			10.7		
30	25.6	32.3		31.4	32.1		30.8	32		26.3			19.6			10.3		
32		29.9	27.3	28.9	29.8		27.2	29.6		24.8	27		19.1	16.7		10		
34		27.9	25.3	25.6	27.7		25.1	26.9		22.8	26.4		18.6	16.5		9.7		
36		26	23.6	20.6	25.9	23	23.3	24.9		21.1	24.5		18.3	16.3		9.4		
38			22.1	24.3	21.5	21.7	23.3	19.6	19.6	22.8			17.2	15.8		9.1	9.8	
40			20.7	22.9	20.2	20	21.8	19.5	18.5	21.3			16	15.4		8.9	9.4	
42					18.9	16.3	20.4	18.4	17.4	20	17	15	15			8.6	9.2	
44					17.7		19.3	17.2	16.5	18.7	16.7	14.1	14.7			8.4	8.9	
46					16.8		18.2	16.3	15.9	17.7	15.8	12.1	14.2	14.5		8.1	8.6	
48								15.3	13.1	16.7	14.8	11.3	12.8	14.3	7.7	8.4		
50								14.5		15.7	14	10.8	12.3	13.4	7.4	8.2	8.6	
52										15	13.2	10.2	11.7	12.7	6.9	7.9	8.4	
54											12.5	10	11.1	12.1	6.6	7.6	8.2	
56											11.9	10.6	11.3	6.3	7.1	7.9		
58											11.3	10.1	10.8	6.1	6.8	7.6		
60													10.3	5.7	6.5	7.2		
62													9.8	5.5	6.2	6.8		
64													9.2		5.9	6.5		
66															5.6	6		
68																6		
70																	5.6	

# LIFTING PERFORMANCE

S-boom length(m)	41																								
	27			33			39			45			51			60									
W-jib length(m)	27			33			39			45			51			60									
S-boom angle	85°	75°	65°	85°	75°	65°	85°	75°	65°	85°	75°	65°	85°	75°	65°	85°	75°	65°							
Radius(m)																									
12																									
14																									
16	62.5			55.6																					
18	55.6			52.2			41.4			31.7															
20	50			48.7			40.3			30.8			22.6												
22	45.6			45			39			29.4			22												
24	41.6			40.9			37.7			28.9			21.4			11.7									
26	38.1	32.5		37.5			36.4			27.8			20.8			11.2									
28	35.3	32.2		34.7	29.2		34.1			27.2			20.3			10.9									
30	30.9	29.7		32.2	29		31.6			26.6			19.8			10.6									
32		27.4		30	27.8		29.5	26.3		26			19.3			10.2									
34		25.5		27	25		26.3	24.5		23.7	23.1		18.9			9.8									
36		23.7	20.2	24.4	23.2		24.4	22.7		22	22.2		18.5	19.5		9.5									
38		22.3	20	21.7			22.7	21.2		20.4	20.7		17.9	19.3		9.2									
40			18.7		20.4	18.2	21.2	19.8		19	19.3		16.6	18.8		9	9.5								
42			17.6		19.1	18	19.6	18.7		18	18.2		15.5	17.6		8.8	9.3								
44			16.6		18.1	17		17.5	14.8	17	17.1		14.5	16.6		8.6	9								
46						16.1		16.6	14.6	16.1	16.1		12.5	15.6		8.4	8.8								
48						15.1		15.6	13.8	15.4	15.2	13.2	11.7	14.7		7.9	8.5								
50						14.3		14.8	13		14.4	12.5	11.1	13.9	11.5	7.6	8.3								
52						13.5			12.4		13.7	11.9	10.5	13.1	11.3	7.2	8.1								
54									11.8		12.9	11.2	10	12.5	10.7	6.8	7.9								
56									11.1			10.6		11.8	10.1	6.5	7.6	8.2							
58												10.1		11.2	9.6	6.2	7.1	8.1							
60												9.6		10.6	9.1	5.9	6.8	7.8							
62												9.1			8.6	5.6	6.5	7.4							
64															8.2		6.2	7							
66															7.8		5.9	6.7							
68															7.5		5.7	6.3							
70																	5.5	6							
72																			5.7						
74																				5.4					
76																					5.4				

S-boom length(m)	47																								
	27			33			39			45			51			60									
W-jib length(m)	27			33			39			45			51			60									
S-boom angle	85°	75°	65°	85°	75°	65°	85°	75°	65°	85°	75°	65°	85°	75°	65°	85°	75°	65°							
Radius(m)																									
14	58.8																								
16	52.5			51.3																					
18	46.9			46.1			41.6																		
20	42.8			41.9			40.5			30															
22	39.1			38.1			39.4			29.5			22.2												
24	35.9			35			37.5			29.1			21.6			11.5									
26	33.1			32.5			34.4			28.4			21			11.3									
28	30.6	28.7		30.3			31.9			27.3			20.4			10.9									
30		26.7		28.4	25.8		30			26.8			19.9			10.7									
32		24.7		26.6	24.2		27.8	23.6		26.2			19.5			10.3									
34		23		25	22.5		25.9	23.4		24.3			19			9.9									
36		21.5		21	19.7		24.4	21.9		22.7	21.2		18.6			9.6									
38		20.2		19.7	18.5		22.8	20.5		21.1	19.8		18.2	19.2		9.2									
40			16.6		18.5		21.4	19.2		19.7	18.7		16.9	18.1		9									
42			15.6		17.4	15	20	18.1		18.5	17.5		15.8	17		8.8	9.6								
44			14.7		17.2	14.2		16.9		17.4	16.5		14.7	16		8.6	9.2								
46			13.6		17	13.4		16	13	16.4	15.5		13.8	15		8.4	8.9								
48			12.9			12.7		15.1	12.8	15.6	14.6		12	14.2		8	8.7								
50						12.1		14.3	12.2		13.9		11.2	13.3		7.7	8.5								
52						11.7		14.1	11.6		13.1	10.9	10.7	12.6		7.3	8.3								
54						11			10.9		12.4	10.4	10.1	12	9.9	6.9	8.1								
56									10.4		11.8	9.9	11.3	9.3	6.6	7.9									
58									9.9		11.4	9.3	10.7	8.8	6.3	7.5	8								
60													8.8	10.2	8.3	5.9	7	7.1							
62													8.4	9.7	7.9	5.7	6.7	6.7							
64													8		7.5	5.5	6.4	6.4							
66													7.8		7.1		6.1	6							
68															6.7		5.8	5.7							
70															6.4		5.6	5.4							
72																	5.2	5							
74																			4.8						
76																				4.5					
78																					4.4				

# LIFTING PERFORMANCE

S-boom length(m)	53																			
W-jib length(m)	27			33			39			45			51			60				
S-boom angle	85°	75°	65°	85°	75°	65°	85°	75°	65°	85°	75°	65°	85°	75°	65°	85°	75°	65°		
Radius(m)																				
14																				
16	55																			
18	49.1			48.1				41.9												
20	44.4			43.4				40.8				31.3								
22	40.3			39.4				38.8				29.8				22.1				
24	36.9			35.9				35.3				29.2				21.7				12
26	33.8			33.1				32.5				28.6				21.1				11.4
28	31.3			30.6				30.3				27.5				20.6				11
30	29.4	27.8		28.8				28.1				26.9				20.1				10.7
32	27.2	25.9		26.6	25.1		26.3				25.6				19.6				10.3	
34		24.3		25	23.4		24.4	21.6		23.9				19.1				10		
36		22.7		23.4	22		22.8	21.2		22.5	20.5		18.7				9.7			
38		21.2		22	20.7		21.6	19.9		20.9	19.3		18.3				9.4			
40		19.9			19.4		20.3	18.8		19.8	18.1		17.3	17.3		9.1				
42		19.4	15.4		18.2		19.2	17.7		18.8	17		16.1	16.4		8.9				
44			14.6		17.1		18.1	16.6		17.8	16.1		15	15.4		8.7	9.7			
46			13.8		16.2	13.1		15.6		16.9	15.4		14.1	14.6		8.5	9.3			
48			13		16	12.4		14.8	13.2	15.9	14.2		12.2	13.8		8.1	9.1			
50			12.3			11.8		14	11.2		13.5		11.3	12.9		7.7	8.9			
52						11.1		13.3	10.6		12.7	10	10.8	12.3		7.4	8.7			
54						10.6			10		12.1	9.5	10.2	11.6		6.9	8.3			
56						10.1			9.5		11.4	8.9		11	8.6	6.6	8.1			
58									9		10.9	8.5		10.4	8	6.3	7.9			
60									8.6			8.1		10	7.5	6.1	7.5			
62												7.7		9.4	7.1	5.7	7.2	6		
64												7.2		9	6.7	5.5	6.7	5.6		
66												6.9			6.4		6.4	5.3		
68												6.5			6		6.1	4.9		
70															5.7		5.9	4.6		
72															5.5		5.7	4.4		
74																		4.1		
76																		3.9		
78																		3.7		
80																		3.5		

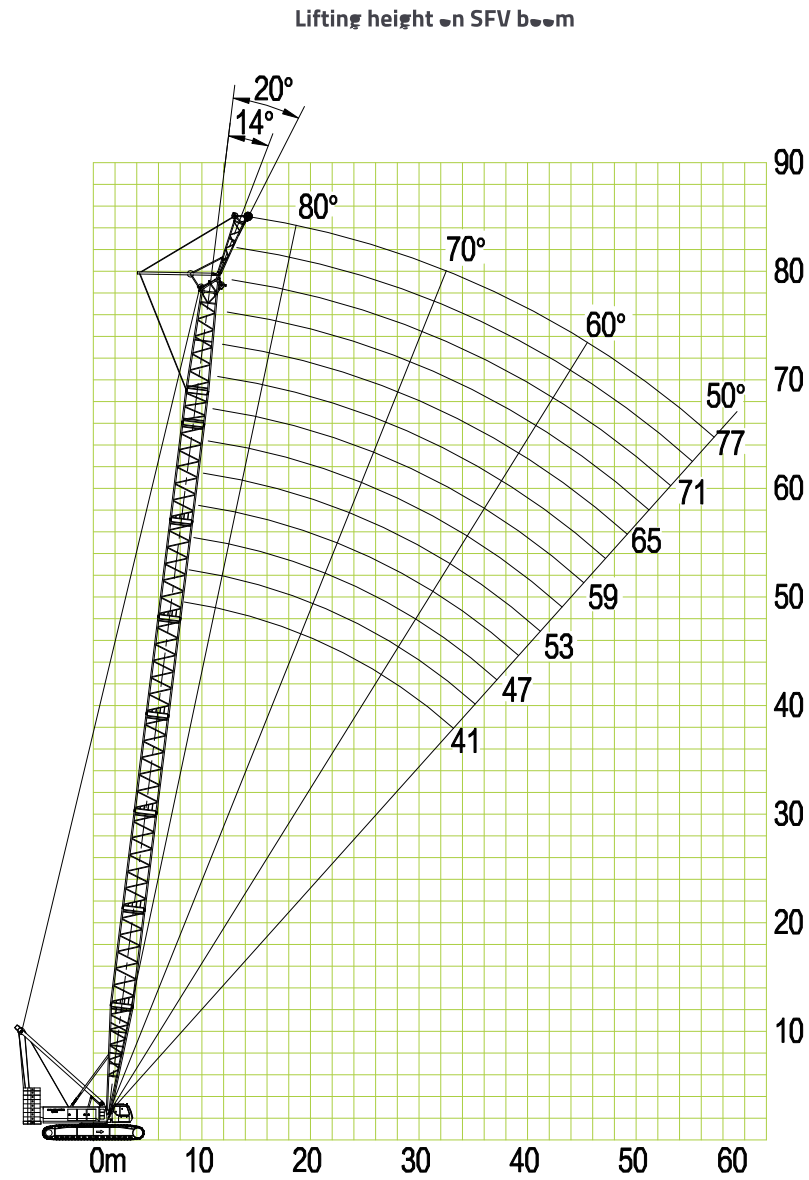
S-boom length(m)	59																			
W-jib length(m)	27			33			39			45			51			60				
S-boom angle	85°	75°	65°	85°	75°	65°	85°	75°	65°	85°	75°	65°	85°	75°	65°	85°	75°	65°		
Radius(m)																				
14																				
16	51.9																			
18	46.3			45.6																
20	41.9			40.9				40				31.5								
22	38.1			37.2				36.3				30				22.4				
24	34.7			33.8				33.1				29.4				21.9				11.8
26	31.9			31				30.6				28.8				21.3				11.6
28	29.2			28.3				27.6				26.7				20.7				11.1
30	26.7			25.9				25.2				25.9				20.2				10.8
32	24.6	24.7		23.8				23.1				24.1				19.7				10.5
34		23.1		22	22.3		21.2				22.5				19.2				10.1	
36		21.6		20.4	20.9		19.6	19.8		20.9				18				9.8		
38		20.3		18.9	19.6		18.2	18.8		19.7	17.2		16.6				9.5			
40		19.2			18.5		16.8	17.8		18.8	17		15.3	15.8		9.1				
42		18			17.4		15.6	16.8		17.5	16.1		14.1	15.4		8.9				
44			13.1		16.4		14.5	15.8		16.6	15.2		13.1	14.6		8.7	9.8			
46			12.6		15.5			15		15.8	14.3		12.1	13.7		8.5	9.7			
48			12		14.7		11.2		14.1		15	13.6		11.2	12.9		8.3	9.4		
50			11.3				10.7		13.4			12.8		10.3	12.3		7.8	9		
52			10.7				10.2		12.6	9.6		12.2		9.9	11.7		7.5	8.8		
54							9.7		12	9		11.6		9.4	11		7	8.6		
56							9.1			8.6		10.9	8		10.4		6.7	8.3		
58							8.7			8.1		10.4	7.6		9.8	7	6.4	8.1		
60										7.8		9.8	7.1		9.3	6.6	6.1	7.8		
62										7.4			6.8		8.9	6.2	5.8	7.4		
64										6.9			6.4		8.5	5.9	5.6	7.1	4.7	
66													6.1		8	5.6	6.7	4.4		
68													5.8		5.3		6.4	4.2		
70													5.5		4.9		6.1	3.9		
72															4.7		5.8	3.7		
74															4.4		5.6	3.5		
76															4.2			3.2		
78																		3.1		
80																		3.1		
82																		3		
84																				

# LIFTING PERFORMANCE

S-boom length(m)	62																	
W-jib length(m)	27			33			39			45			51			60		
S-boom angle	85°	75°	65°	85°	75°	65°	85°	75°	65°	85°	75°	65°	85°	75°	65°	85°	75°	65°
Radius(m)																		
14																		
16	50.6																	
18	45			44.4														
20	40.6			39.7			38.8											
22	36.9			36			35.3			30.7			22.6					
24	33.8			32.8			32.2			29.4			21.9			14.8		
26	30.9			30.2			30			28.2			21.3			13.2		
28	28.8			28.1			27.5			26.5			20.7			12.7		
30	26.9			26.3			25.6			25			20.2			12.4		
32	25	26.8		24.4			23.8			23.4			19.8			12		
34		25		22.8	24.4		22.2			21.9			19.3			11.7		
36		23.1		21.4	22.5		20.9	22.2		20.3			18.8			11.3		
38		21.6		20.2	21.1		19.7	20.6		19.1	20.3		18.4			11		
40		20.3			20		18.4	19.5		17.9	19.2		17.5			10.7		
42		19.4			19.1		17.5	18.2		17	18.1		16.6	17.5		10.5		
44		18.4			18.1		16.6	17.1		16	16.9		15.6	16.4		10.3		
46			14.7		17.2			16		15.2	16		14.8	15.6		10	11.4	
48			14.3		16.3	13.2		15.2		14.6	15.3		13.9	15		9.6	11	
50			13.4		15.5	12.6		14.6		14.1	14.5		11.7	14.4		9.1	10.8	
52			12.8			12.1		14.2	11.5		13.8		11.1	13.8		8.6	10.5	
54			12.2			11.5		13.8	10.9		13.2		10.5	13.1		8.1	10.3	
56			11.8			10.9		13.1	10.3		12.6	10.3	10	12.5		7.7	10	
58						10.3			9.8		12.2	9.7		11.9		7.2	9.8	
60						9.8			9.5		11.9	9.4		11.3		6.8	9.4	
62									8.9			8.8		10.6	8.4	6.2	8.8	
64									8.6			8.4		10.3	7.8	6.2	8.4	6.9
66												8.1		10	7.5		7.9	6.6
68												7.8			7.2		7.5	6.3
70												7.2			6.6		7.1	6
72												6.9			6.3		6.7	5.7
74															5.9		6.3	5.5
76															5.8		6	5.2
78															5.6			4.9
80															5.3			4.6
82																		4.5
84																		4.3

# LIFTING PERFORMANCE

Lifting performance on SFV boom



# LIFTING PERFORMANCE

Radius (m)	S-boom length (m)							
	41		44		47		50	
	FV-jib angle (°)							
	14	20	14	20	14	20	14	20
10	60.0	56.9	60.0	56.9/11	60.0/11	56.9/11		
12	60.0	54.7	60.0	54.7	60.0	54.7	60.0/11	
14	60.0	50.3	60.0	52.5	60.0	52.5	60	56.9
16	58	48.1	59.1	48.1	60.0	50.3	60	52.5
18	54.7	45.9	56.9	45.9	56.9	48.1	60	50.3
20	51.4	43.8	52.4	43.8	51.9	45.9	58	48.1
22	47.2	41.6	46.7	42.7	46.1	43.8	51.2	45.9
24	42	39.4	41.9	41.6	41.5	41.6	45.6	43.8
26	37.8	37.8	37.7	37.7	37.4	37.5	40.9	41.1
28	34.1	34.2	34.1	34.1	33.8	34	37	37.1
30	31.1	31.1	31	31.1	30.8	30.8	33.6	33.7
32	28.5	28.5	28.4	28.4	28.1	28.2	30.6	30.6
34	27.3/33	27.3/33	26	26	25.8	25.9	27.8	28
36			25/35	25/35	23.9	23.9	25.5	25.6
38					22.9/37	22.9/37	23.6	23.6
40							21.7/39	21.8/39
42								

Radius (m)	S-boom length (m)							
	53		56		59		62	
	FV-jib angle (°)							
	14	20	14	20	14	20	14	20
11	60.0							
12	60.0	56.9	60.0	56.9	60.0	56.9/13	60.0	56.9/13
14	60.0	54.7	60.0	54.7	60.0	54.7	60.0	55.8
16	60.0	51.4	60.0	52.5	59.1	52.5	56.9	52.5
18	57.4	49.2	56.9	50.3	55.8	50.3	53.6	50.3
20	51.2	47	50.3	48.1	49.2	48.1	48.1	49.2
22	45.6	44.8	44.8	44.8	43.8	43.8	43.2	43.8
24	40.9	41.1	40.4	40.5	39.9	40	39.4	39.4
26	37	37.1	36.6	36.7	36	36.1	35	35.5
28	33.4	33.4	33.2	33.3	32.7	32.8	31.7	32.3
30	30.3	30.4	30.1	30.1	29.5	29.9	29.5	29.5
32	27.7	27.7	27.4	27.5	27.1	27.3	27	27
34	25.4	25.4	25.1	25.2	24.8	25	24.7	24.7
36	23.3	23.4	23.2	23.2	22.8	22.9	22.6	22.6
38	21.5	21.5	21.3	21.4	21	21.1	20.8	20.8
40	19.9	19.9	19.8	19.8	19.5	19.5	19.2	19.2
42	19.2/41	19.2/41	18.3	18.3	18	18	17.7	17.8
44			17.6/43	17.6/43	16.6	16.7	16.5	16.5
46					16.1/45	16.1/45	15.2	15.2
48							14.7/47	14.7/47
50								

## CAUTION:

1. The lifting capacity is given in metric tons, and the sign '\*/\*' indicates 'lifting capacity / radius'. The values in grey are determined by boom strength, while the rest values are determined by crane stability.
2. For SFV boom configuration, S-boom angle = 50° – 83°, FV-jib angle = 14° or 20°, and FV-jib length = 6 m.

# LIFTING PERFORMANCE

Radius (m)	S-boom length (m)							
	65		68		71		74	
	FV-jib angle(°)							
	14	20	14	20	14	20	14	20
13	55.2	54.1	49.2		44.6			
14	55	53.9	48.7	47.9	42.4	41.6	38	37.2
16	53.9	53	47.6	46.8	41.6	41	37.1	36.5
18	50.9	50.3	46.8	45.9	40.5	39.9	36.4	35.8
20	48.1	47.6	45.7	45.1	39.6	39.1	35.3	35
22	42.7	42.7	41.6	42.7	38.8	38.3	34.3	33.9
24	38.3	38.3	37.2	37.7	37.2	37.2	33.5	33.1
26	35	35	33.9	33.9	33.4	33.4	32.7	32.4
28	31.7	31.7	30.6	30.6	30.1	30.1	29.5	29.5
30	28.4	28.4	28.2	28.2	27.9	27.9	27.3	27.3
32	26.3	26.8	25.7	26.3	25.2	25.2	24.6	24.6
34	24.1	24.5	23.5	23.5	23	23	22.4	22.4
36	22.4	22.4	21.9	21.9	21.3	21.3	20.8	20.8
38	20.6	20.7	19.7	19.7	19.1	19.7	18.6	19.1
40	18.9	19.1	18	18.6	18	18	17.5	17.5
42	17.5	17.5	17	17	16.4	16.4	15.9	15.9
44	16.2	16.2	15.3	15.6	15.3	15.3	14.8	14.8
46	15	15	14.2	14.2	13.7	13.9	13.4	13.7
48	13.9	13.9	13.4	13.4	13.1	13.1	12.6	12.6
50		13.4/49	12.6	12.6	12	12	11.5	11.5
52				12/51	11.2	11.2	10.7	10.9
54						10.9/53	9.8	9.8
56								9.3/55
58								

Radius (m)	S-boom length (m)	
	77	
	FV-jib angle(°)	
	14	20
14	33.6	32.5/15
16	32.9	32.4
18	32.3	31.7
20	31.3	30.9
22	30.6	30.2
24	29.7	29.4
26	28.7	28.4
28	26.9	26.7
30	26.3	26
32	24.1	24.1
34	21.9	21.9
36	19.7	20.2
38	18	18.6
40	17	17
42	15.3	15.3
44	14.2	14.2
46	13.1	13.1
48	12	12
50	10.9	10.9
52	10.4	10.4
54	9.3	9.3
56	8.5	8.5
58		

**ZOOMLION**

**Zoomlion Heavy Industry Science & Technology Co.,Ltd.**

Add: No.677, Lugu Road, Zoomlion Industrial Park, Changsha, Hunan, China, 410205

Copyright©2017 Zoomlion. All rights reserved. Reproduction and copying of any part of contents is not allowed for any purposes without Zoomlion's approval.

