

Rough
terrain crane

ZRT600



ZRT 600



Capacity CE
50 T



Boom length
9.5-37.1 m



Jib
8 m



Max height
47.4 m





/ Rough terrain crane **ZRT600**

Carrier Frame

Carrier Frame

Chassis torsion-resistant box type construction in high strength steel

Outriggers

Four hydraulic H-stabilizers moved by horizontal cylinders and jacks with locking valves with self-levelling system

Excursion of the beams in three positions: 0%, 50% and 100%. Easily removable floats

Controls and position indicator placed in the cab.

Engine

Diesel CUMMINS QSB6.7 (Stage V - Euromot 5) turbo intercooler electronically controlled and water-cooled

Maximum power 194 KW (260 HP) at 2400 rpm.
Fuel tank 300 l

Transmission

Electrically controlled automatic hydraulic transmission DANA, with torque divider

Powershift transmission with 6 forward and 6 reverse gears

Hydraulic Pumps

LS pump for main operations.

Gear pumps for slewing, outriggers and steering

Axles

Front: towing / steering with differential and hubs with planetary reductions, rigidly mounted on the chassis

Rear: tractor / steering with differential and hubs with planetary reductions, oscillating for use off-road or locked in a horizontal position for use on tires

Differential lockable by means of a button in the cabin

Steering

Fully independent hydraulic steering operated through the steering wheel

Four steering modes: only front wheels, only rear wheels, coordinated, crab

Brakes

Service/Emergency: dual independent pneumatic circuit operated by pedal acting on all wheels

Parking: with spring cylinder acting on all wheels

Tyres

"Off-road" type, single mounted 16.00-25

Electrical Equipment

Two 24 Volt / 120 Ah batteries

CE



/ Rough terrain crane

ZRT600

UPPER STRUCTURE

Telescopic Boom

Composed of five elements with a "U" section, hydraulically operated with the first section independent and the last three proportional

Two operating modes to maximize performance. Maximum height at tip main boom 45.1 m. Maximum height at tip with Jib 61.2 m

Contrappeso

Contrappeso fisso da 7,8 t

Winches (Main and Auxiliary)

Grooved drum with rope press.
Multiple-disc negative brake and counterbalance valve

Rope length: on the main winch: 210 m
On the auxiliary winch: 130 m
Diameter of the rope: 17 mm

Slewing

Hydraulic motor coupled to reducer
Continuous 360° rotation
Sistema di bloccaggio pneumatico della rotazione
Angular sensor for viewing the turret position on the main display in the cabin

Cabin

Hydraulic tilt of 20° controlled by the operator
Large windows with panoramic visibility with the possibility of front glass opening
Ergonomic sliding seat adjustable in height, depth and according to the weight of the operator
Cabin air circulation fan, two electric wipers, fire extinguisher, seat belt, hot/cold air conditioning system
14" main display for both travel and crane functions
Additional display for viewing winch cameras and rear side camera

Crane Controls

Turret movements are controlled by two hydraulically controlled joysticks located on the armrests of the operator seat. The left joystick controls rotation and auxiliary winch, the right joystick controls swing/lift and main winch

Electrical switches for controlling outriggers, winch fast running and free rotation on electrical system

Steering wheel for steering control of all steering modes.
Manual transmission and electric parking brake. Slow and fast gear control via in-cab selector switch. Engine warning instrumentation.

Distributors

No. 2 Hydraulic distributors that ensure the simultaneous combination of the crane movements of which the main one for lifting, extension and winching maneuvers and the secondary one for rotation

Load Moment Indicator

Limiter with 7" color touchscreen display
Anti-two block system for block limit switch
Movement locking system with acoustic and visual alarm
Angle recognition system and boom extension
Automatic recognition of stabilizer configuration on display

Optional Accessories

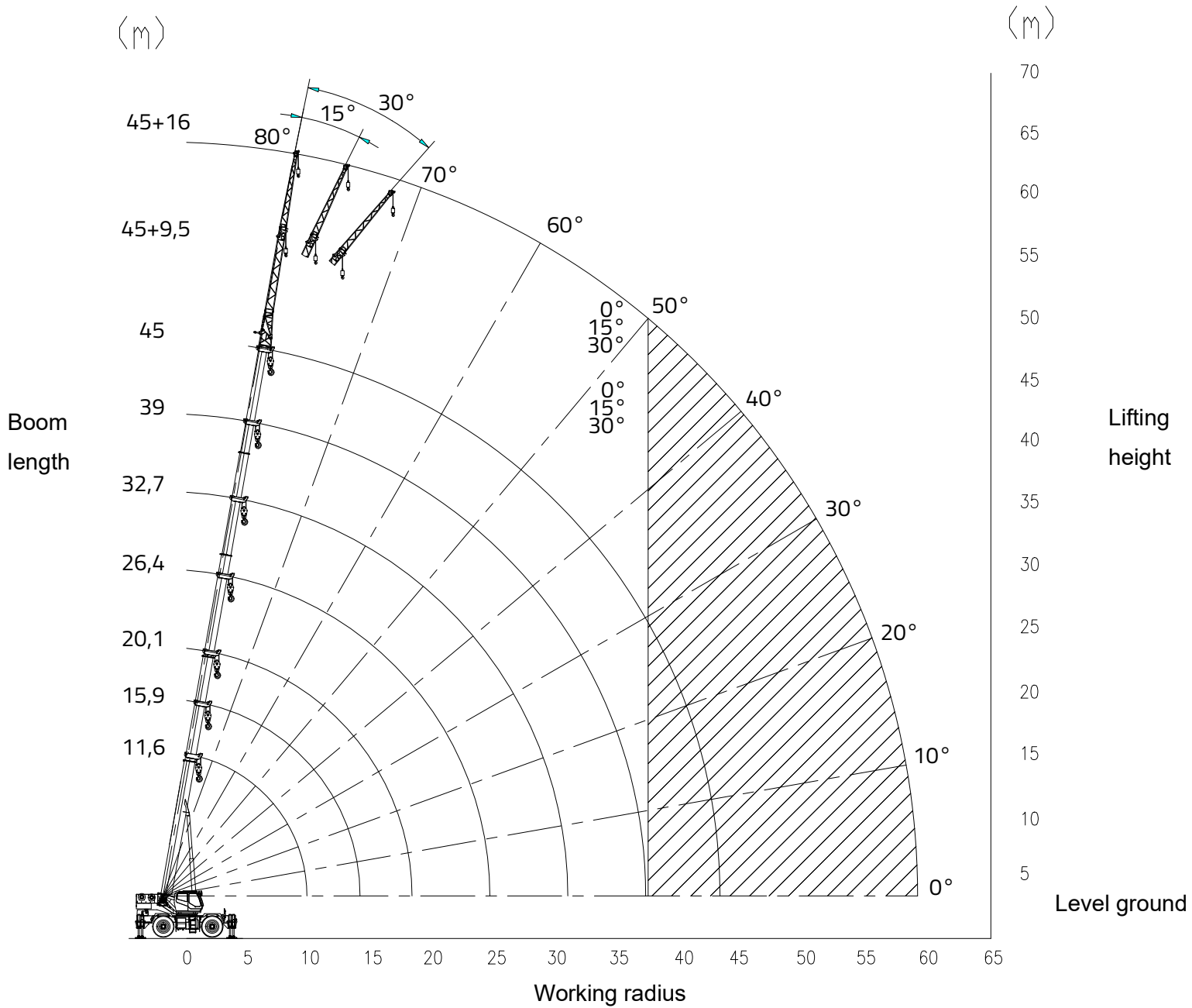
Rooster
Mechanically adjustable 9.5/16 m variable spout double sickle 0°- 15°- 30°
Miscellaneous pulleys



WORK DIAGRAM

/Rough terrain crane

ZRT600



WORK DIAGRAM

/Rough terrain crane

ZRT600



100%



45 m



7.8 t



360°



Outriggers extended at 100% - Telescopic cylinder I 100% extended
Counterweight 7,8 t - Unit: t

TAB 1

| Radius | Boom length | | | | | | |
|---------|-------------|------|------|------|------|------|------|
| (m) | 11.6 | 15.9 | 20.1 | 26.4 | 32.7 | 39.0 | 45.0 |
| 3.0 | 60 | 46 | 36 | | | | |
| 3.5 | 59 | 46 | 36 | | | | |
| 4.0 | 56 | 46 | 36 | | | | |
| 4.5 | 53 | 44 | 34 | 27 | | | |
| 5.0 | 47 | 42 | 33.5 | 27 | | | |
| 5.5 | 42 | 40 | 32.5 | 27 | | | |
| 6.0 | 37.5 | 36.5 | 32 | 26 | 19.8 | | |
| 6.5 | 35 | 34.3 | 30.6 | 25 | 19.8 | | |
| 7.0 | 30.5 | 31 | 29.5 | 24 | 19.8 | | |
| 7.5 | 29.2 | 29 | 27.5 | 23 | 19 | | |
| 8.0 | 26.7 | 26.5 | 26 | 22 | 18.4 | 14.4 | |
| 9.0 | 20.2 | 20 | 19.5 | 20 | 17 | 13.6 | |
| 10.0 | | 16 | 16 | 16.5 | 15.8 | 12.8 | 10 |
| 11.0 | | 13.2 | 13 | 13.6 | 14 | 12 | 9.6 |
| 12.0 | | 11 | 11 | 11.8 | 12.2 | 11.5 | 9.2 |
| 14.0 | | | 7.7 | 8.8 | 9.2 | 9.6 | 8.4 |
| 16.0 | | | 5.5 | 6.7 | 7.1 | 7.5 | 7.6 |
| 18.0 | | | | 5.1 | 5.6 | 6 | 6.2 |
| 20.0 | | | | 3.9 | 4.4 | 4.8 | 5 |
| 22.0 | | | | | 3.5 | 3.8 | 4.1 |
| 24.0 | | | | | 2.75 | 3.1 | 3.4 |
| 26.0 | | | | | 2.15 | 2.4 | 2.7 |
| 28.0 | | | | | | 1.9 | 2.15 |
| 30.0 | | | | | | 1.5 | 1.75 |
| 32.0 | | | | | | 1.1 | 1.35 |
| 34.0 | | | | | | | 1.05 |
| 36.0 | | | | | | | 750 |
| I (m) | 0 | 4.3 | 8.5 | 8.5 | 8.5 | 8.5 | 8.5 |
| II (m) | 0 | 0 | 0 | 6.3 | 12.6 | 18.9 | 24.9 |
| Reeving | 12 | 10 | 8 | 6 | 4 | 4 | 3 |
| Hook | | | | 60t | | | |

WORK DIAGRAM

/Rough terrain crane

ZRT600



50%



40.8 m



7.8 t



360°



Outriggers extended at 100% - Telescopic cylinder I 50% extended
Counterweight 7,8 t - Unit: t

TAB 2

| (m) | Radius | | Boom length | | | |
|---------|--------|------|-------------|------|------|------|
| | 11.6 | 15.9 | 22.2 | 28.5 | 34.8 | 40.8 |
| 3.0 | 60 | 46 | | | | |
| 3.5 | 59 | 46 | 27 | | | |
| 4.0 | 56 | 46 | 27 | | | |
| 4.5 | 53 | 44 | 27 | | | |
| 5.0 | 47 | 42 | 27 | 24 | | |
| 5.5 | 42 | 40 | 27 | 24 | | |
| 6.0 | 37.5 | 36.5 | 27 | 24 | | |
| 6.5 | 35 | 34.3 | 27 | 24 | 16.5 | |
| 7.0 | 30.5 | 31 | 27 | 23 | 16.5 | |
| 7.5 | 29.2 | 29 | 26 | 22 | 16 | |
| 8.0 | 26.7 | 26.5 | 25 | 21 | 15.5 | 10.8 |
| 9.0 | 20.2 | 20 | 20.5 | 19 | 14.5 | 10.4 |
| 10.0 | | 16 | 17 | 17.2 | 13.5 | 10 |
| 11.0 | | 13.2 | 14.2 | 15 | 12.5 | 9.6 |
| 12.0 | | 11 | 12.3 | 13 | 11.6 | 9.2 |
| 14.0 | | | 9 | 9.7 | 9.8 | 8.4 |
| 16.0 | | | 6.9 | 7.5 | 7.8 | 7.6 |
| 18.0 | | | 5.3 | 5.9 | 6.2 | 6.7 |
| 20.0 | | | | 4.7 | 5 | 5.5 |
| 22.0 | | | | 3.8 | 4.1 | 4.5 |
| 24.0 | | | | | 3.3 | 3.7 |
| 26.0 | | | | | 2.7 | 3.1 |
| 28.0 | | | | | 2.2 | 2.5 |
| 30.0 | | | | | | 2.1 |
| 32.0 | | | | | | 1.7 |
| 34.0 | | | | | | 1.4 |
| I (m) | 0 | 4.3 | 4.3 | 4.3 | 4.3 | 4.3 |
| II (m) | 0 | 0 | 6.3 | 12.6 | 18.9 | 24.9 |
| Reeving | 12 | 10 | 6 | 5 | 4 | 3 |
| Hook | | | | 60t | | |

WORK DIAGRAM

/Rough terrain crane

ZRT600



100%



36.5 m



7.8 t



360°



**Outriggers extended at 100% - Telescopic cylinder I not extended
Counterweight 7,8 t - Unit: t**

TAB 3

| Radius (m) | Boom length | | | | |
|---------------|-------------|------|------|------|------|
| | 11.6 | 17.9 | 24.2 | 30.5 | 36.5 |
| 3.0 | 60 | 27 | | | |
| 3.5 | 59 | 27 | | | |
| 4.0 | 56 | 27 | 24 | | |
| 4.5 | 53 | 27 | 24 | | |
| 5.0 | 47 | 27 | 24 | | |
| 5.5 | 42 | 27 | 23.2 | 18.6 | |
| 6.0 | 37.5 | 27 | 22.5 | 17.9 | |
| 6.5 | 35 | 27 | 21.7 | 17.2 | |
| 7.0 | 30.5 | 27 | 21 | 16.5 | 11.5 |
| 7.5 | 28.5 | 25.5 | 20.2 | 15.7 | 11.5 |
| 8.0 | 26 | 24 | 19.5 | 15 | 11.5 |
| 9.0 | 20.2 | 22 | 18 | 13.8 | 11 |
| 10.0 | | 18 | 16.5 | 12.8 | 10.5 |
| 11.0 | | 15 | 15.5 | 11.8 | 9.8 |
| 12.0 | | 12.8 | 13.6 | 11 | 9.2 |
| 14.0 | | 9.6 | 10.3 | 9.5 | 8.2 |
| 16.0 | | | 8.1 | 8.3 | 7.2 |
| 18.0 | | | 6.5 | 6.7 | 6.4 |
| 20.0 | | | | 5.5 | 5.6 |
| 22.0 | | | | 4.6 | 4.8 |
| 24.0 | | | | 3.8 | 4 |
| 26.0 | | | | | 3.4 |
| 28.0 | | | | | 2.9 |
| 30.0 | | | | | 2.4 |
| 32.0 | | | | | |
| 34.0 | | | | | |
| I (m) | 0 | 0 | 0 | 0 | 0 |
| II (m) | 0 | 6.3 | 12.6 | 18.9 | 24.9 |
| Reeving | 12 | 6 | 5 | 4 | 3 |
| Hook | | | 60t | | |

WORK DIAGRAM

/Rough terrain crane

ZRT600



100%



45+9.5 m



7.8 t



360°



Nominal loads on boom and jib
Rated capacity table with arm + 9,5m jib on Ouriggers extended at 100%,
Counterweight 7,8t - Unit: t

TAB 4

| Boom angle (°) | 0° | 15° | 30° |
|----------------|-----|------|-----|
| 80 | 5 | 3.3 | 2.5 |
| 78 | 5 | 3.3 | 2.5 |
| 76 | 4.8 | 3.2 | 2.5 |
| 74 | 4.5 | 3.1 | 2.5 |
| 72 | 4.2 | 3 | 2.4 |
| 70 | 3.9 | 2.8 | 2.3 |
| 68 | 3.6 | 2.7 | 2.2 |
| 66 | 3.3 | 2.6 | 2.1 |
| 64 | 2.8 | 2.5 | 2 |
| 62 | 2.4 | 2.2 | 1.9 |
| 60 | 2.1 | 2 | 1.8 |
| 58 | 1.8 | 1.6 | 1.6 |
| 56 | 1.5 | 1.4 | 1.3 |
| 54 | 1.2 | 1.2 | 1.2 |
| 52 | 1 | 1 | 9 |
| 50 | 8 | 7 | 7 |
| Reeving | | 1 | |
| Hook | | 5.5t | |

WORK DIAGRAM

/Rough terrain crane

ZRT600



100%



45+16 m



7.8 t



360°



Nominal loads on boom and jib
Rated capacity table with arm + 16m jib on Ouriggers extended at 100%
Counterweight 7,8t - Unit: t

TAB 5

| Boom angle (°) | 0° | 15° | 30° |
|----------------|------|------|------|
| 80 | 3 | 2 | 1.4 |
| 78 | 3 | 2 | 1.4 |
| 76 | 2.9 | 1.8 | 1.3 |
| 74 | 2.7 | 1.7 | 1.3 |
| 72 | 2.5 | 1.6 | 1.2 |
| 70 | 2.3 | 1.5 | 1.2 |
| 68 | 2.1 | 1.4 | 1.1 |
| 66 | 2 | 1.3 | 1.1 |
| 64 | 1.9 | 1.3 | 1.1 |
| 62 | 1.8 | 1.2 | 1 |
| 60 | 1.7 | 1.2 | 1 |
| 58 | 1.4 | 1.1 | 1 |
| 56 | 1.2 | 1.1 | 0.9 |
| 54 | 1 | 0.9 | 0.8 |
| 52 | 0.8 | 0.7 | 0.65 |
| 50 | 0.65 | 0.6 | 0.55 |
| Reeving | | 1 | |
| Hook | | 5.5t | |

WORK DIAGRAM

/Rough terrain crane

ZRT600



50%



45 m



7.8 t



360°



Outriggers 50% - Telescopic cylinder I 100% extended
Counterweight 7,8 t - Unit: t

TAB 6

| Radius (m) | Boom length | | | | | | |
|---------------|-------------|------|------|------|------|------|------|
| | 11.6 | 15.9 | 20.1 | 26.4 | 32.7 | 39.0 | 45.0 |
| 3.0 | 60 | 46 | 36 | | | | |
| 3.5 | 54 | 44 | 36 | | | | |
| 4.0 | 47 | 42 | 36 | | | | |
| 4.5 | 41 | 38 | 34 | 27 | | | |
| 5.0 | 33 | 32.5 | 30.5 | 27 | | | |
| 5.5 | 28 | 26.5 | 26 | 26.5 | | | |
| 6.0 | 23.5 | 22.5 | 22 | 23 | 19.8 | | |
| 6.5 | 20 | 19.5 | 19 | 20 | 19.8 | | |
| 7.0 | 18.5 | 18.3 | 18 | 19 | 19 | | |
| 7.5 | 16 | 15.8 | 15.5 | 16.5 | 17 | | |
| 8.0 | 14.2 | 13.8 | 13.5 | 14.5 | 15 | 14.4 | |
| 9.0 | 11.2 | 10.8 | 10.6 | 11.5 | 12 | 12 | |
| 10.0 | | 8.8 | 8.6 | 9.5 | 10 | 10 | 10 |
| 11.0 | | 7.1 | 6.9 | 8 | 8.6 | 9 | 9 |
| 12.0 | | 5.9 | 5.6 | 6.7 | 7.4 | 7.8 | 8 |
| 14.0 | | | 3.7 | 4.7 | 5.3 | 5.8 | 6 |
| 16.0 | | | 2.3 | 3.3 | 3.9 | 3.3 | 3.6 |
| 18.0 | | | | 2.3 | 2.8 | 3.3 | 3.6 |
| 20.0 | | | | 1.5 | 2 | 2.5 | 2.8 |
| 22.0 | | | | | 1.4 | 1.8 | 2.1 |
| 24.0 | | | | | 0.9 | 1.3 | 1.5 |
| 26.0 | | | | | | 0.8 | 1.1 |
| I (m) | 0 | 4.3 | 8.5 | 8.5 | 8.5 | 8.5 | 8.5 |
| II (m) | 0 | 0 | 0 | 6.3 | 12.6 | 18.9 | 24.9 |
| Reeving | 12 | 10 | 8 | 6 | 4 | 4 | 3 |
| Hook | | | | 60t | | | |

WORK DIAGRAM

/Rough terrain crane

ZRT600



50%



40.8 m



7.8 t



360°



Outriggers 50% - Telescopic cylinder I 50% extended
Counterweight 7,8 t - Unit: t

TAB 7

| Radius | Boom length | | | | | |
|---------|-------------|------|------|------|------|------|
| (m) | 11.6 | 15.9 | 22.2 | 28.5 | 34.8 | 40.8 |
| 3.0 | 60 | 46 | | | | |
| 3.5 | 54 | 44 | 27 | | | |
| 4.0 | 47 | 42 | 27 | | | |
| 4.5 | 41 | 38 | 27 | | | |
| 5.0 | 33 | 32.5 | 27 | 24 | | |
| 5.5 | 28 | 26.5 | 26 | 24 | | |
| 6.0 | 23.5 | 22.5 | 24 | 24 | | |
| 6.5 | 20 | 19.5 | 21.5 | 21.5 | 16.5 | |
| 7.0 | 18.5 | 18.3 | 19 | 19 | 16.5 | |
| 7.5 | 16 | 15.8 | 17 | 17 | 16 | |
| 8.0 | 14.2 | 13.8 | 15 | 15 | 15 | 10.8 |
| 9.0 | 11.2 | 10.8 | 12 | 12.5 | 12.5 | 10.4 |
| 10.0 | | 8.8 | 10 | 10.2 | 10.5 | 10 |
| 11.0 | | 7.1 | 8.4 | 9 | 9.5 | 9.5 |
| 12.0 | | 5.9 | 7 | 7.6 | 8.1 | 8.5 |
| 14.0 | | | 5 | 5.6 | 6.1 | 6.4 |
| 16.0 | | | 3.6 | 4.2 | 4.5 | 4.9 |
| 18.0 | | | 2.6 | 3.2 | 3.5 | 3.8 |
| 20.0 | | | | 2.4 | 2.7 | 3 |
| 22.0 | | | | 1.7 | 2 | 2.3 |
| 24.0 | | | | | 1.5 | 1.8 |
| 26.0 | | | | | 1.1 | 1.3 |
| 28.0 | | | | | 0.75 | 1 |
| 30.0 | | | | | | 0.7 |
| I (m) | 0 | 4.3 | 4.3 | 4.3 | 4.3 | 4.3 |
| II (m) | 0 | 0 | 6.3 | 12.6 | 18.9 | 24.9 |
| Reeving | 12 | 10 | 6 | 5 | 4 | 3 |
| Hook | | | | 60t | | |

WORK DIAGRAM

/Rough terrain crane

ZRT600



50%



36.5 m



7.8 t



360°



Outriggers 50% - Telescopic cylinder I not extended
Counterweight 7,8 t - Unit: t

TAB 8

| Radius (m) | Boom length | | | | |
|---------------|-------------|------|------|------|------|
| | 11,6 | 17,9 | 24,2 | 30,5 | 36,5 |
| 3.0 | 60 | 27 | | | |
| 3.5 | 54 | 27 | | | |
| 4.0 | 47 | 27 | 24 | | |
| 4.5 | 41 | 27 | 24 | | |
| 5.0 | 33 | 27 | 24 | | |
| 5.5 | 28 | 27 | 23.2 | 18.6 | |
| 6.0 | 23.5 | 26 | 22.5 | 17.9 | |
| 6.5 | 20 | 23 | 21.5 | 17.2 | |
| 7.0 | 18.5 | 20 | 20.5 | 16.5 | 11.5 |
| 7.5 | 16 | 17.5 | 17.5 | 15.7 | 11.5 |
| 8.0 | 14.2 | 15.5 | 15.5 | 15 | 11.5 |
| 9.0 | 11.2 | 12.5 | 12.5 | 12.5 | 11 |
| 10.0 | | 10.5 | 10.7 | 11 | 10.5 |
| 11.0 | | 8.8 | 9.4 | 9.8 | 9.6 |
| 12.0 | | 7.5 | 8 | 8.5 | 8.7 |
| 14.0 | | 5.5 | 6 | 6.5 | 6.7 |
| 16.0 | | | 4.6 | 5 | 5.1 |
| 18.0 | | | 3.6 | 3.8 | 4 |
| 20.0 | | | | 3.1 | 3.3 |
| 22.0 | | | | 2.4 | 2.6 |
| 24.0 | | | | 1.9 | 2.1 |
| 26.0 | | | | | 1.7 |
| 28.0 | | | | | 1.3 |
| 30.0 | | | | | 1 |
| I (m) | 0 | 0 | 0 | 0 | 0 |
| II (m) | 0 | 6.3 | 12.6 | 18.9 | 24.9 |
| Reeving | 12 | 6 | 5 | 4 | 3 |
| Hook | | | 60t | | |

WORK DIAGRAM

/Rough terrain crane

ZRT600



0%



45 m



7.8 t



360°



Outriggers not extended - Telescopic cylinder I 100% extended
Counterweight 7,8 t - Unit: t

TAB 9

| Radius | Boom length | | | | | | |
|---------|-------------|------|------|------|------|------|------|
| (m) | 11.6 | 15.9 | 20.1 | 26.4 | 32.7 | 39.0 | 45.0 |
| 3.0 | 35 | 32 | 28 | | | | |
| 3.5 | 27 | 26 | 25 | | | | |
| 4.0 | 22 | 21.5 | 21 | 20 | | | |
| 4.5 | 18 | 17.5 | 17 | 17 | | | |
| 5.0 | 14.5 | 14 | 13.8 | 14 | | | |
| 5.5 | 12 | 11.8 | 11.5 | 12 | 12.5 | | |
| 6.0 | 10.4 | 10 | 9.8 | 10.5 | 11 | | |
| 6.5 | 9 | 8.7 | 8.5 | 9.2 | 9.8 | | |
| 7.0 | 7.8 | 7.5 | 7.3 | 8.1 | 8.9 | 9 | |
| 7.5 | 6.8 | 6.4 | 6.3 | 7.2 | 7.8 | 8 | |
| 8.0 | 6 | 5.5 | 5.4 | 6.3 | 6.9 | 7.2 | 7 |
| 9.0 | | 4.2 | 4 | 4.9 | 5.4 | 5.8 | 6 |
| 10.0 | | 3.1 | 2.9 | 3.8 | 4.3 | 4.6 | 5 |
| 11.0 | | 2.2 | 2 | 2.9 | 3.4 | 3.8 | 4 |
| 12.0 | | 1.6 | 1.4 | 2.2 | 2.7 | 3 | 3.3 |
| 14.0 | | | | 1.2 | 1.6 | 1.9 | 2.1 |
| 16.0 | | | | | 1.1 | 1.2 | 1.3 |
| 18.0 | | | | | | 0.7 | 0.8 |
| I (m) | 0 | 4.3 | 8.5 | 8.5 | 8.5 | 8.5 | 8.5 |
| II (m) | 0 | 0 | 0 | 6.3 | 12.6 | 18.9 | 24.9 |
| Reeving | 12 | 10 | 8 | 6 | 4 | 4 | 3 |
| Hook | | | | 60t | | | |

WORK DIAGRAM

/Rough terrain crane

ZRT600



0%



40.8 m



7.8 t



360°



Outriggers not extended - Telescopic cylinder I 50% extended
Counterweight 7,8 t - Unit: t

TAB 10

| Radius (m) | Boom length | | | | | |
|---------------|-------------|------|------|------|------|------|
| | 11.6 | 15.9 | 22.2 | 28.5 | 34.8 | 40.8 |
| 3.0 | 35 | 32 | 27 | | | |
| 3.5 | 27 | 26 | 24 | | | |
| 4.0 | 22 | 21.5 | 20.5 | | | |
| 4.5 | 18 | 17.5 | 17 | 17.5 | | |
| 5.0 | 14.5 | 14 | 14.5 | 15 | | |
| 5.5 | 12 | 11.8 | 12.5 | 13 | 13 | |
| 6.0 | 10.4 | 10 | 10.5 | 11 | 11.5 | |
| 6.5 | 9 | 8.7 | 9.5 | 10 | 10.5 | |
| 7.0 | 7.8 | 7.5 | 8.5 | 9 | 9.4 | 9 |
| 7.5 | 6.8 | 6.4 | 7.5 | 8 | 8.4 | 8.7 |
| 8.0 | 6 | 5.5 | 6.5 | 7.2 | 7.6 | 7.9 |
| 9.0 | | 4.2 | 5.1 | 5.7 | 6.1 | 6.4 |
| 10.0 | | 3.1 | 4 | 4.6 | 5 | 5.3 |
| 11.0 | | 2.2 | 3.2 | 3.7 | 4.1 | 4.4 |
| 12.0 | | 1.6 | 2.4 | 3 | 3.4 | 3.7 |
| 14.0 | | | 1.2 | 1.8 | 2.2 | 2.5 |
| 16.0 | | | | 1.1 | 1.4 | 1.7 |
| 18.0 | | | | | 0.8 | 1.1 |
| I (m) | 0 | 4.3 | 4.3 | 4.3 | 4.3 | 4.3 |
| II (m) | 0 | 0 | 6.3 | 12.6 | 18.9 | 24.9 |
| Reeving | 12 | 10 | 6 | 5 | 4 | 3 |

Hook

60t

WORK DIAGRAM

/Rough terrain crane

ZRT600



0%



36.5 m



7.8 t



360°



Outriggers not extended - Telescopic cylinder I not extended
Counterweight 7,8 t - Unit: t

TAB 11

| Radius (m) | Boom length | | | | |
|---------------|-------------|------|------|------|------|
| | 11.6 | 17.9 | 24.2 | 30.5 | 36.5 |
| 3.0 | 35 | 27 | | | |
| 3.5 | 27 | 26 | 24 | | |
| 4.0 | 22 | 21 | 22 | | |
| 4.5 | 18 | 18 | 18.5 | | |
| 5.0 | 14.5 | 15 | 16 | 16 | |
| 5.5 | 12 | 13 | 14 | 14 | |
| 6.0 | 10.4 | 11.5 | 12.2 | 12.5 | |
| 6.5 | 9 | 10 | 10.8 | 11 | 11 |
| 7.0 | 7.8 | 8.8 | 9.5 | 9.8 | 10 |
| 7.5 | 6.8 | 7.9 | 8.5 | 8.8 | 9 |
| 8.0 | 6 | 7 | 7.6 | 7.9 | 8.2 |
| 9.0 | | 5.6 | 6.2 | 6.5 | 6.7 |
| 10.0 | | 4.5 | 5 | 5.4 | 5.6 |
| 11.0 | | 3.6 | 4.2 | 4.5 | 4.7 |
| 12.0 | | 2.9 | 3.5 | 3.8 | 4 |
| 14.0 | | 1.8 | 2.4 | 2.7 | 2.9 |
| 16.0 | | | 1.5 | 1.8 | 2.1 |
| 18.0 | | | 0.9 | 1.2 | 1.4 |
| 20.0 | | | | 0.8 | 0.9 |
| I (m) | 0 | 0 | 0 | 0 | 0 |
| II (m) | 0 | 6.3 | 12.6 | 18.9 | 24.9 |
| Reeving | 12 | 6 | 5 | 4 | 3 |
| Hook | | | 60t | | |

WORK DIAGRAM

/Rough terrain crane
ZRT600



Rated capacity table for lifting on tires

TAB 12

Unit: t

| Radius | Boom length | | | | | | | |
|---------|-------------|-----------------------------|------|-----------------------------|------|-----------------------------|------|-----------------------------|
| | 11.6 | | 15.9 | | 20.1 | | 26.4 | |
| (m) | 360° | Stroke with front side load | 360° | Stroke with front side load | 360° | Stroke with front side load | 360° | Stroke with front side load |
| 3.0 | 21 | 21 | 20 | 18 | 20 | | | |
| 3.5 | 20 | 20 | 19.5 | 18 | 19 | 16 | | |
| 4.0 | 17.5 | 18 | 17 | 17 | 16.5 | 15.5 | 17 | |
| 4.5 | 14.5 | 16.5 | 14 | 16.5 | 13.5 | 15 | 14.3 | 11 |
| 5.0 | 12.5 | 14.5 | 12 | 14.5 | 11.5 | 14.5 | 12.3 | 11 |
| 5.5 | 10.8 | 13.5 | 10 | 13.5 | 9.5 | 13.2 | 10.5 | 11 |
| 6.0 | 9.4 | 12 | 9 | 11.8 | 8.8 | 11.5 | 9.2 | 11 |
| 6.5 | 8 | 10.5 | 7.6 | 10.2 | 7.4 | 10 | 8.1 | 10.5 |
| 7.0 | 7 | 9.2 | 6.6 | 9 | 6.3 | 8.8 | 7.1 | 9.5 |
| 7.5 | 6 | 8.1 | 5.6 | 8 | 5.3 | 7.7 | 6.2 | 8.5 |
| 8.0 | 5.3 | 7.1 | 4.8 | 7 | 4.5 | 6.7 | 5.4 | 7.5 |
| 9.0 | | | 3.5 | 5.3 | 3.2 | 5.1 | 4.1 | 5.9 |
| 10.0 | | | 2.5 | 4.1 | 2.2 | 3.9 | 3.2 | 4.6 |
| 11.0 | | | 1.6 | 3.2 | 1.4 | 3 | 2.4 | 3.7 |
| 12.0 | | | 1 | 2.4 | 0.8 | 2.2 | 1.7 | 2.9 |
| 14.0 | | | | | | 1 | | 1.8 |
| 16.0 | | | | | | | | 1 |
| I (m) | 0 | | 4.3 | | 8.5 | | 8.5 | |
| II (m) | 0 | | 0 | | 0 | | 6.3 | |
| Reeving | 12 | | 10 | | 8 | | 6 | |
| Hook | | | | | 60t | | | |

Note: 360° when the crane is stationary



26.4 m



360°





/ Rough terrain crane ZRT600

SPECIFICATIONS



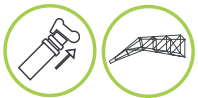
Capacity
CE

| CE Capacity | Work Radius |
|-------------|-------------|
| 60 t | 3 m |



Hook

| Capacity | Pulleys | Lines | Weight | Configuration |
|----------|---------|-------|--------|---------------|
| 40 t | 4 | 8 | 570 kg | Standard |
| 20 t | 3 | 6 | 230 kg | Optional |
| 6,5 t | - | 1 | 150 kg | Optional |



Telescopic boom
and jib

| Boom length | Max height | Sections | Luffing angle | Jib | Max height with jib |
|-------------|------------|----------|---------------|------------|------------------------|
| 11,6 / 45 m | 47,5 m | 5 | -2° / +80° | 9,5 / 16 m | 64 m |



Working
speed

| | Max speed | Line | Line pull | Length |
|-----------------|----------------------------|------|-----------|--------|
| Main winch | 0 - 130 m/min. direct pull | Ø 17 | 55 kN | 210 m |
| Secondary winch | 0 - 130 m/min. direct pull | Ø 17 | 55 kN | 130 m |
| Rotation 360° | 0 - 2,4 r/min | | | |
| Boom lifting | from -2° to 78° | | 70 s/ca | |
| Boom extension | from 9.5 to 37.1 m | | 135 s/ca | |



Engine

| Engine | Model (Stage V) | Cylinders | Nominal power | Max torque | Fuel tank | Adblue tank |
|---------|--------------------|-----------|----------------|----------------|-----------|----------------|
| CUMMINS | QSB6.7 | 6 | 194kW@2400 rpm | 990Nm@1500 rpm | 300 l | 25 l |



Machine speed

| Drive | Transmission | Steering mode | Maximum speed | Slope |
|--------------|------------------------------------|---|------------------|-------|
| 4x2 4x4 | 6 forward gears 6 reverse gears | 2 front steering 2 rear steers 4 coordinated steering Crab | 45 km/h | 75% |



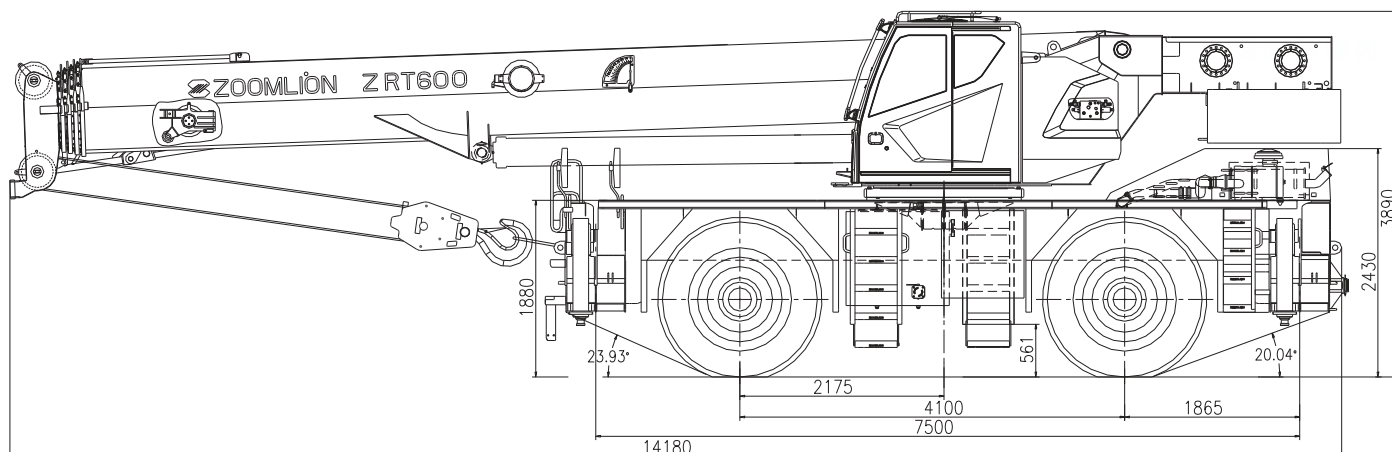
Weights

| Axles | 1 | 2 | Total weight | Counterweight |
|-------|----|----|--------------|----------------|
| Tons. | 25 | 20 | 45 | 7,8 (included) |



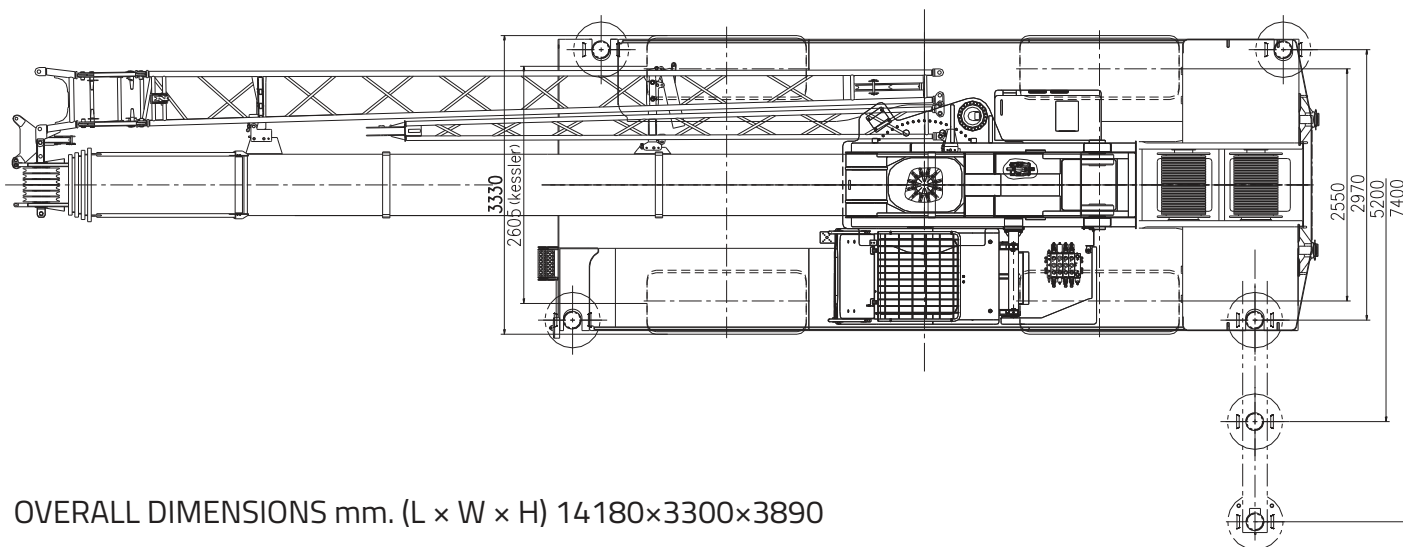
/ Rough terrain crane ZRT600

DIMENSIONS AND WEIGHTS



TOTAL WEIGHT: 45000 KG* | Front axle weight: 25000 KG | Rear axle weight: 20000 KG

OUTRIGGERS



OVERALL DIMENSIONS mm. (L x W x H) 14180x3300x3890

Weight including: main winch equipped, secondary winch without rope, 7.8 T fixed counterweight and 45 T block

Product specifications are subject to change without notice.
Photographs are for illustrative purposes only.

