

M Extra/R Extra



**SB-30 / SB-60 / SB-85**  
PIPELAYERS

 **DRESSTA**<sup>®</sup>

# A Reliable Partner

Headquartered in Poland, Dressta is today a global manufacturer of crawler dozers and pipelayers and a member of the LiuGong family.

At Dressta, our passion for heavy machinery is over 70 years old. This rich heritage and strong pedigree have allowed us to build know-how and manufacturing excellence through strategic partnerships along the way.

We are committed to delivering high quality, reliable and powerful machines coupled with full technical service & parts support whilst tailoring machines to individual customer needs, helping them achieve more in the jobs they do.

## OUR HOME AT THE HEART OF EUROPE



## GLOBAL REACH & DISTRIBUTION

Dressta is providing its customers with machines that they need to get any job done coupled with streamlined, efficient and responsive technical service organization with 7 commercial and aftermarket support hubs around the globe.



**Close to our dealers & customers we serve**

- ▶ 7 global centers & parts distribution centers
- ▶ 74 dealers in 60 countries



Dressta is redefining crawler dozer & pipelayer productivity and durability with its customer focused approach to design and manufacturing.

### ENGINEERED FOR YOUR BUSINESS

What makes us truly unique? With a dedicated team of application engineers, Dressta has the unique ability to customize designs, modify standard equipment to better perform in specific application tasks thus helping customers to improve productivity and bottom line results.

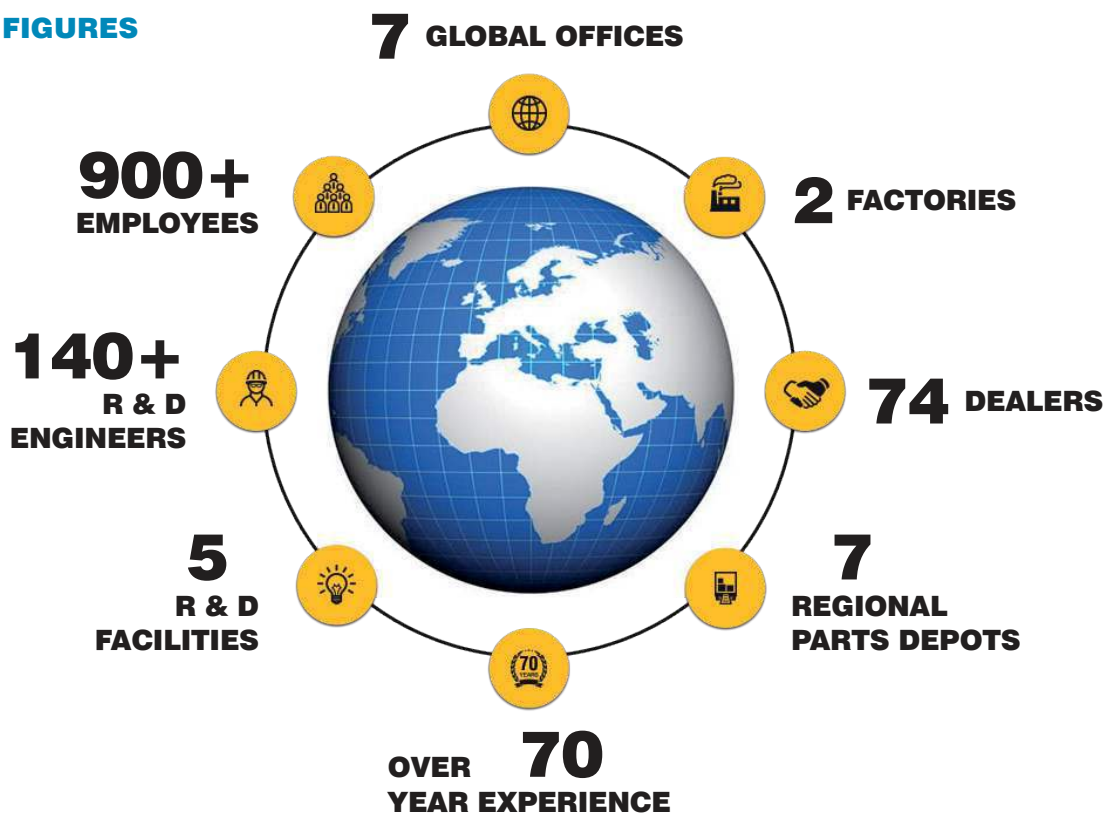
Every day, around the world, no matter the job or conditions clients rely on perfectly engineered Dressta machines.

### DRESSTA MACHINES PROVIDE EXCELLENT PERFORMANCE IN A VARIETY OF APPLICATIONS:

A global manufacturer of full line crawler dozers ranging from 78 to 536 hp and pipelayers with maximum lifting capacity of 100 tons, Dressta can configure your machine to provide excellent performance in a variety of applications.



### DRESSTA IN FIGURES



# Engineered for productivity

When your business relies on equipment that is durable, productive and backed up by a global network – you can rely on Dressta. Over its 70+ year history, Dressta has developed a reputation for productive equipment tailored to the needs of its hardworking customers.

Engineered for productivity, safe operation, reliability and long life, Dressta pipelayers are the choice of industry professionals around the world.

Operator comfort, ease of serviceability and productivity are at the heart of their design, while outstanding power and lifting capacity deliver the right performance at any job site.

Dressta pipelayers come loaded with features that deliver total lifetime value:

1. Powerful Cummins engines that deliver impressive power for excellent performance.
2. 6 Speed F/R drivetrain that grants exceptional power in towing and outstanding precision in manoeuvring.
3. Low drive track system allowing stability on slopes and excellent manoeuvrability in full power gradual turns.
4. Unrivalled stability with low centre of gravity thanks to unique counterweight design and more track on the ground.
5. Exceptional all-round visibility, with clear line of sight of the entire jobsite.
6. Ergonomically designed cab with deluxe seat, large LCD display, A/C, sound suppression and responsive controls for comfort, command and ease of operation.
7. Rugged undercarriage design for maximum durability and smooth, stable operation.
8. Highly efficient cooling system suitable for all climate conditions.
9. Able to operate in ambient temperatures from -40°C to +60°C.
10. Lifetime lubricated rollers and heavy duty chains and idlers for extended track life, lower operating costs and maximum productivity.
11. Modular power train design and easily accessible diagnostic check ports, filters and sight gauges for excellent serviceability.
12. FOPS and 2-post ROPS certified cab, guaranteeing a safer environment for the operator.
13. Option for extra long booms provide most effective operation at all kinds of oil and gas projects.
14. Detachable working head on the boom for shifting conveyor belts.





## SB-30

### OPERATING WEIGHT

27 580 kg (60,803 lb)

### HORSE POWER (NET)

188 HP (140 kW)

### LIFTING CAPACITY

33 tons (72,752 lb)

## SB-60

### OPERATING WEIGHT

51 280 kg (113,052 lb)

### HORSE POWER (NET)

310 HP (231 kW)

### LIFTING CAPACITY

72 tons (158,731 lb)



## SB-85

### OPERATING WEIGHT

64 480 kg (142,153 lb)

65 580 kg (144,579 lb)

### HORSE POWER (NET)

370 HP (276 kW)

### LIFTING CAPACITY

100 tons (220,460 lb)

# Power you can depend on

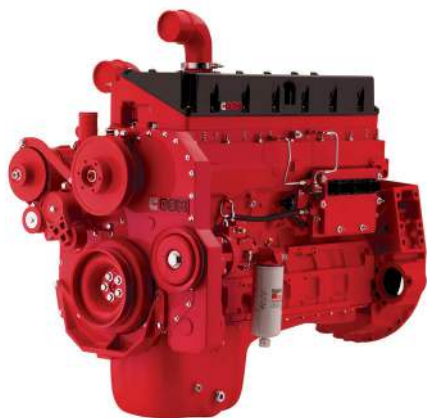
Dressta's pipelayers are powered by a range of turbocharged Cummins engines which feature a high-pressure common-rail fuel system to ensure efficient performance while supplying the power you need for maximum productivity at the job site. Thanks to the proven common-rail fuel system, this technology delivers a precise quantity of fuel at high pressure and increases fuel economy and performance, decreasing exhaust and noise emissions with consistent performance at every rpm.

## SB-30 M EXTRA

Engine: Cummins QSB 6.7

Emission Standards: EPA Tier 3 / EU Stage IIIA

Cummins QSB 6.7 features in-cylinder technology and proven electronic controls to handle the toughest job requirements. It offers improved cold-start capability and major enhancements that make Dressta products work harder, smarter, quieter and longer.



## SB-60 M EXTRA

Engine: Cummins QSM 11

Emission Standards: EPA Tier 3 / EU Stage IIIA

Cummins proven performance, dependability and durability is maintained while operating cleanly and efficiently with the QSM 11. By using in-cylinder technology, this engine meets EPA Tier 3 and EU Stage IIIA emissions standards. Advanced electronics provide enhanced engine performance for Dressta machines with higher torque and better throttle response at every rpm as well as increased fuel economy, precision diagnostics and engine protection. The QSM also features improved cold starting and up to 50% quieter operation for better operator comfort.



## SB-85 M EXTRA / SB-85 R EXTRA

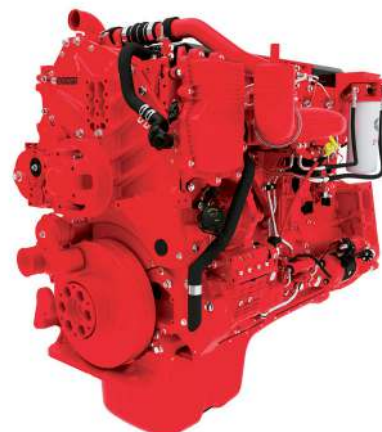
Engine: Cummins QSX 15

Emission Standards: EPA Tier 3 - Tier 4 Final / EU Stage IIIA - IV

The Tier 3 and Stage IIIA Cummins features in-cylinder technology and proven electronic controls to handle the toughest job requirements.

Developed to meet U.S. Environmental Protection Agency (EPA) and EU emissions regulations, the Cummins QSX 15 engine features an advanced technology solution for total integration of the engine and the exhaust after-treatment system. Fuel economy is optimized above 5 percent compared to Tier 4 Interim engines, while achieving near-zero emissions at the same time. Thanks to the incorporated Cooled Exhaust Gas Recirculation (EGR) system, this next-generation engine minimizes Diesel Exhaust Fluid (DEF) consumption levels as well.

The Tier 3 and Stage IIIA Cummins QSB 6.7 features in-cylinder technology and proven electronic controls to handle the toughest job requirements.



# Safety Built in

Dressta's commitment to you includes an equal commitment to your safety. Our pipelayers are equipped with all the necessary safety features to give you peace of mind and help you focus on the job at hand.



Our pipelayers are designed to protect your most important asset. Your operator.

**All Dressta pipelayers are equipped with electronic safe load indicator along with other features that give the operator peace of mind:**

- Boom kick-out
- Hook Block Limit Switch
- Emergency Hook Lowering System (Free Fall)
- Angle Indicator of Lifting Capacity



All necessary load handling information is displayed on 7" LCD color monitor.



Emergency hook lowering system is standard to keep you safe in all conditions.

# Comfort zone

When you're on the job site from dawn to dark, you want a cab that is comfortable all day long.

Dressta operators will enjoy exceptional in-cab comfort from the performance of the air conditioning system to the location of the controls for optimal operator comfort.

The FOPS and 2-post ROPS certified cab provides more space and is equipped with:

- Large tinted side and rear sliding windows for cross ventilation and an enhanced view of the jobsite.
- Air recirculation system.
- Air conditioner / heater / pressurizer.
- Noise reduction trim.
- Deluxe air suspension seat including 6-way adjustment and arm rests.

## NOISE AND VIBRATION MANAGEMENT

Isolated cab mounts reduce vibration for enhanced comfort and noise reduction, while the low drive undercarriage system ensures minimal vibration and noise from the final drives.

## AIR CONDITIONING

The air conditioning system creates the right environment in any weather, all year round. The heater, the A/C evaporator unit and fan are mounted under the operator's seat for consistent cab temperature throughout the day, while fresh air filters are mounted below the cab rear windows and the condenser unit is mounted on the engine radiator guard.

## EASY MONITORING

A high resolution 7" LCD display screen provides real-time system values for both driving and hoisting systems.

- Multiple language options
- Large anti-glare full color monitor
- Generous memory storage
- Dual (metric/imperial) units



High resolution 7 inch

LCD display screen



The cab provides a clear view to the boom working areas, as well as the entire job site.

#### **CAB DESIGN AND LAYOUT**

The comfortable suspension seat is adjustable to the operator's weight and sitting position and is equipped with arm rests and seat belt.

#### **RESPONSIVE AND PREDICTABLE CONTROL**

Ergonomically designed controls are conveniently located: LHS Controls for Driving System and RHS controls for Boom / Hook / Counterweight controls for operator comfort and ease of operation.

#### **SKYLIGHT WINDOW**

A large skylight window provides a clear view from the seat to the boom.



# Maximum return on your investment

## CAB

Six-sided, heavy duty with ROPS / FOPS for greater operator safety. The best in class all-around visibility and excellent view of the boom end in upper position through roof window.

## DEPENDABLE POWER

Unmatched performance driven by the fuelwise Cummins engines that enhance torque output with more power at lower engine speeds.

## COUNTERWEIGHTS

Unique horizontal design provides the lowest center of gravity allowing unrivalled lifting capacity and excellent stability. Front and rear counterweights are extended hydraulically by two separate controls.

## EASE OF TRANSPORTATION

Detachable boom, winch and counterweights along with quickly removable pins make Dressta pipelayers easy to transport between jobsites.

## VERSATILITY

Get the most out of your machine through towing applications by utilizing the unrivalled drawbarpull.

## FAST CONVERSION TO CONVEYOR BELT SHIFTER

The boom is installed with a special head for shifting conveyors belts.



## RANGE OF BOOMS

Variety of boom options that provide the highest operating range in the industry. The durable booms feature high tensile strength steel for the most heavy duty and safe operation. The structure of the boom provides maximum visibility of the job site.

## BOOM KICK-OUT SAFETY SWITCH

Protects the operator, the boom and the cab structure against the most unwanted.

## SAFE LOAD INDICATOR

Electronically controlled hook pin and boom angle transducer continuously informs operator about maximum momentary lifting capacity. System also allows gravitational hook lowering for emergency situations.

## WINCHES

The heavy-duty winch design works in harmony with the hydraulic system for maximum productivity. Boom and hook are driven by independent hydraulic winches controlled by two separate controls for better precision. A modular, plug-and-play design allows for fast replacement and easy field service. Interchangeable parts between hook and boom winch assemblies help reduce costs and maximize uptime.

## NO SLEW LOCK NEEDED

Thanks to being built on dozer platform, no risk of 360 degree slew of the superstructure like on excavator based pipelayers.

## INTERCHANGEABILITY

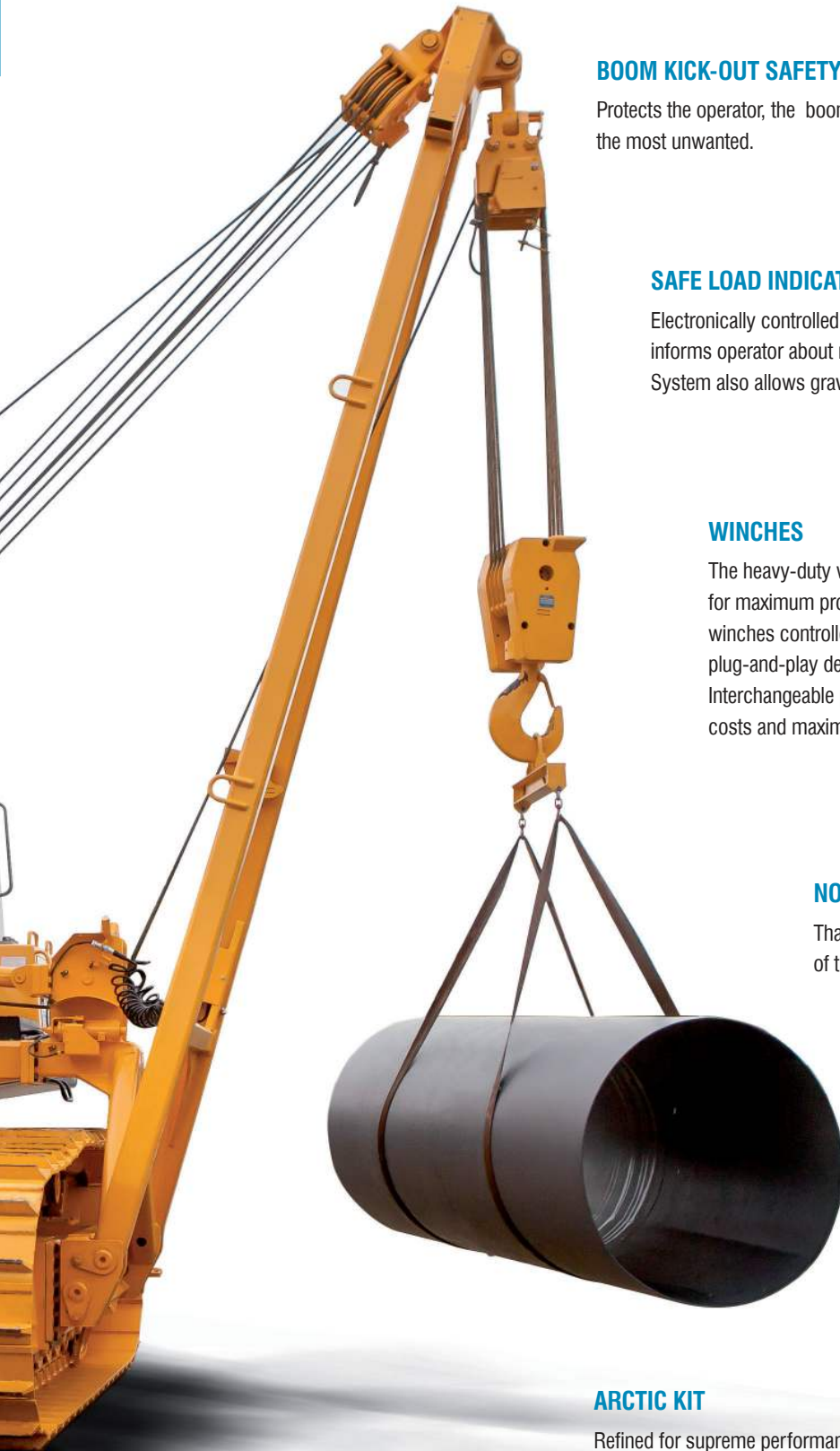
75% commonality between Dressta pipelayers and dozers ensures high availability of spare parts and low service & maintenance costs.

## ARCTIC KIT

Refined for supreme performance in arctic conditions, Dressta pipelayers can be fitted with a special kit for operation in temperatures as low as -40°C.

## HEAVY DUTY UNDERCARRIAGE

Heavy duty 3-point rigid undercarriage is perfectly suited to challenging applications like side slopes or working in rocky, muddy or dry terrain.



# Support when and where you need it

Dressta knows that its equipment is put to the test each and every day, and its machines are engineered to stand up to the challenges and demands of the toughest jobs.

## WARRANTY

When you purchase a Dressta pipelayer, your investment is backed by one of the most comprehensive warranties in the industry. In addition to the standard 12 month warranty, Dressta offers extended warranty protection programs for additional peace of mind.

## EASY PARTS SUPPLY

Genuine Dressta parts are engineered to fit right the first time and to provide the highest levels of performance and reliability while meeting strict quality controls. The global parts network, with seven regional distribution centers and advanced logistics systems, means you can be assured of rapid parts supply of whatever you need, wherever you are.

## GET THE MOST OUT OF YOUR EQUIPMENT

Dressta's stringent quality assurance ensures all products meet the exact needs of customers. Technical support teams offer fast access to factory expertise and information systems while ongoing aftersales support is available via dealerships with factory trained engineers who are available as and when you require.



Our products are supplied worldwide through a well-established network of independent distributors who are as passionate about the industry as you are.



## ENGINE

	SB-30M Extra	SB-60M Extra	SB-85M Extra	SB-85R Extra
Make and model	Cummins OSB6.7	Cummins QSM 11	Cummins QSX 15	Cummins QSX 15
Emissions standard	EPA Tier 3/EU Stage IIIA	EPA Tier 3/EU Stage IIIA	EPA Tier 3/EU Stage IIIA	EPA Tier 4f/EU Stage IV
Displacement	6.7 L (408 in <sup>3</sup> )	11 L (671 in <sup>3</sup> )	15 L (915 in <sup>3</sup> )	15 L (915 in <sup>3</sup> )
Bore and stroke	107 x 124 mm (4.21 x 4.88 in)	125 x 147 mm (4.92 x 5.7 in)	137 x 169 mm (5.39 x 6.65 in)	137 x 169 mm (5.39 x 6.65 in)
Gross horsepower, SAE J1995	203 HP (151 kW)	350 HP (261 kW)	410 HP (306 kW)	410 HP (306 kW)
Net horsepower, SAE J1349 / ISO 9249	188 HP (140 kW)	310 HP (231 kW)	370 HP (276 kW)	370 HP (276 kW)
Rated RPM	2000	2000	2000	2000
Max. torque	945 Nm (700 lb-ft)	1 830 Nm (1,350 lb-ft)	1 825 Nm (1,346 lb-ft) @ 1,400 rpm	1 825 Nm (1,346 lb-ft) @ 1,400 rpm
Air cleaner	2-stage, dry type, with dash mounted electronic service indicator, precleaner	Cummins Filtration Direct dry type with exhaust aspirated primary and safety element and service indicator	Cummins Filtration Direct dry type with exhaust aspirated primary and safety element and service indicator	Cummins Filtration Direct Flow™, dry type, with dash-mounted electronic service indicator
Cold-starting aid	intake - mounted air - inlet grid heater	intake - mounted air - inlet grid heater	intake - mounted air - inlet grid heater	Ether start

## COOLING

	SB-30M Extra	SB-60M Extra	SB-85M Extra	SB-85R Extra
Type	blowing fan, belt driven	suction- type variable-speed fan, hydraulically driven with perforated engine side sheets and heavy duty louvered front grill	suction- type variable-speed fan, hydraulically driven with perforated engine side sheets and heavy duty louvered front grill	suction- type variable-speed fan, hydraulically driven with perforated engine side sheets and heavy duty louvered front grill
Engine Cooling Rating	-50 deg C to +40 deg C (-58 deg F to +104 deg F)			

## BRAKES

	SB-30M Extra	SB-60M Extra	SB-85M Extra	SB-85R Extra
Service	Spring applied hydraulically released multi-disc wet brakes. Foot pedal controlled.			
Parking	The steering brakes also act as service and parking brakes. Service brakes are locked automatically when the transmission safety lever is actuated or when the engine is cut off.			

## ELECTRICAL

	SB-30M Extra	SB-60M Extra	SB-85M Extra	SB-85R Extra
Voltage	24 V			
Number of batteries	2	4	4	4
Battery capacity (each)	815 CCA	960 CCA	815 CCA	815 CCA
Alternator rating	70 A	50 A	105 A	105 A
Lights	10 total; cab mounted (2F & 2R), 2F grill, 2R fuel tank, 1 boom, 1 winch mounted			

## HYDRAULIC

	SB-30M Extra	SB-60M Extra	SB-85M Extra	SB-85R Extra
Type	Open-center hydraulic system with fixed-displacement multiple piston pumps			
System relief pressure	Winch hook and boom 35 Mpa (5,215 psi); counterweights 12 Mpa (1,790 psi)			
Control	Two lever for winch two lever for counterweight			

## OPERATOR STATION

SB-30M Extra

SB-60M Extra

SB-85M Extra

SB-85R Extra

ROPS (ISO 3471 - 2008) and FOPS (ISO 3449 - 2005)

## SERVICEABILITY

SB-30M Extra

SB-60M Extra

SB-85M Extra

SB-85R Extra

### Refill Capacities

	SB-30M Extra	SB-60M Extra	SB-85M Extra	SB-85R Extra
Fuel tank	316 l (84.3 US gal)	690 l (184 US gal)	745 l (198.7 US gal)	700 l (184.9 US gal)
Cooling system	40 l (10.6 US gal)	46 l (12.3 US gal)	68 l (17.96 US gal)	68 l (17.96 US gal)
Engine oil	23 l (6.14 US gal)	40 l (10.7 US gal)	49 l (13.1 US gal)	49 l (13.1 US gal)
Transmission system	145 l (38.7 US gal)	240 l (64 US gal)	270 l (72 US gal)	270 l (72 US gal)
Final drive, each side	38 l (10.1 US gal)	95 l (25.3 US gal)	84 l (22.4 US gal)	84 l (22.4 US gal)
Hydraulic reservoir	115 l (30.7 US gal)	195 l (52 US gal)	195 l (52 US gal)	195 l (52 US gal)
Diesel Exhaust Fluid (DEF) tank	-	-	-	38 l (10 US gal)

## POWERTRAIN

SB-30M Extra

SB-60M Extra

SB-85M Extra

SB-85R Extra

### Transmission

Single stage 370 mm (14.6 in) torque converter with a 2.6:1 stall ratio drives to transmission through a double universal joint. Modular, countershaft type power shift transmission, electro-hydraulic control.

Single stage 330 mm (13 in) torque converter with a 2.5:1 stall ratio drives to transmission through a double universal joint. Modular, countershaft type power shift transmission, electro-hydraulic control.

Single stage 410 mm (16 in) torque converter with a 2.7:1 stall ratio drives to transmission through a double universal joint. Modular, countershaft type power shift transmission, electro-hydraulic control.

Single stage 410 mm (16 in) torque converter with a 2.523:1 stall ratio drives to transmission through a double universal joint. Modular, countershaft type power shift transmission, electro-hydraulic control.

### Steering

Exclusive 2-speed geared steering module provides gradual turns while maintaining full power to both tracks plus conventional clutch-brake performance for tight or pivot turns. Coupled to 3-speed transmission, the 2-speed steering provides 6 speeds forward and 6 reverse. The left hand joystick controls transmission and steering drive for up and down shifting, steering, Hi/Lo selection and LH/RH gradual turn.

### Final drives

Double-reduction type final drives mounted independently of track frames for isolation from shock loads.

Double-reduction planetary type final drives mounted independently of track frames for isolation from shock loads.

Double-reduction planetary type final drives mounted independently of track frames for isolation from shock loads.

Double-reduction planetary type final drives mounted independently of track frames for isolation from shock loads.

### Total ratio

12.13 to 1

25.5 to 1

11.57 to 1

11.57 to 1

## TRAVEL SPEED

SB-30M Extra

SB-60M Extra

SB-85M Extra

SB-85R Extra

Gear	Range	SB-30M Extra		SB-60M Extra		SB-85M Extra		SB-85R Extra	
		Forward km/h (mph)	Reverse km/h (mph)	Forward km/h (mph)	Reverse km/h (mph)	Forward km/h (mph)	Reverse km/h (mph)	Forward km/h (mph)	Reverse km/h (mph)
1st	Low	2.9 (1.8)	3.4 (2.1)	2.8 (1.7)	3.4 (2.1)	3.1 (2.9)	3.7 (2.3)	3.1 (1.9)	3.7 (2.3)
	High	3.9 (2.4)	4.6 (2.9)	3.7 (2.3)	4.5 (2.8)	4.0 (2.5)	4.8 (3.0)	4.0 (2.5)	4.8 (3.0)
2nd	Low	5.2 (3.2)	6.1 (3.8)	4.8 (3.0)	5.9 (3.7)	5.2 (3.2)	6.2 (3.9)	5.2 (3.2)	6.2 (3.9)
	High	6.9 (4.3)	8.1 (5.0)	6.3 (3.9)	7.6 (4.7)	6.6 (4.1)	7.9 (4.9)	6.6 (4.1)	7.9 (4.9)
3rd	Low	8.2 (5.1)	9.6 (6.0)	7.8 (4.8)	9.4 (5.8)	8.1 (5.0)	9.6 (6.0)	8.1 (5.0)	9.6 (6.0)
	High	10.8 (6.7)	12.6 (7.8)	10.1 (6.3)	12.2 (7.6)	10.3 (6.8)	12.2 (7.6)	10.3 (6.8)	12.2 (7.6)

## UNDERCARRIAGE

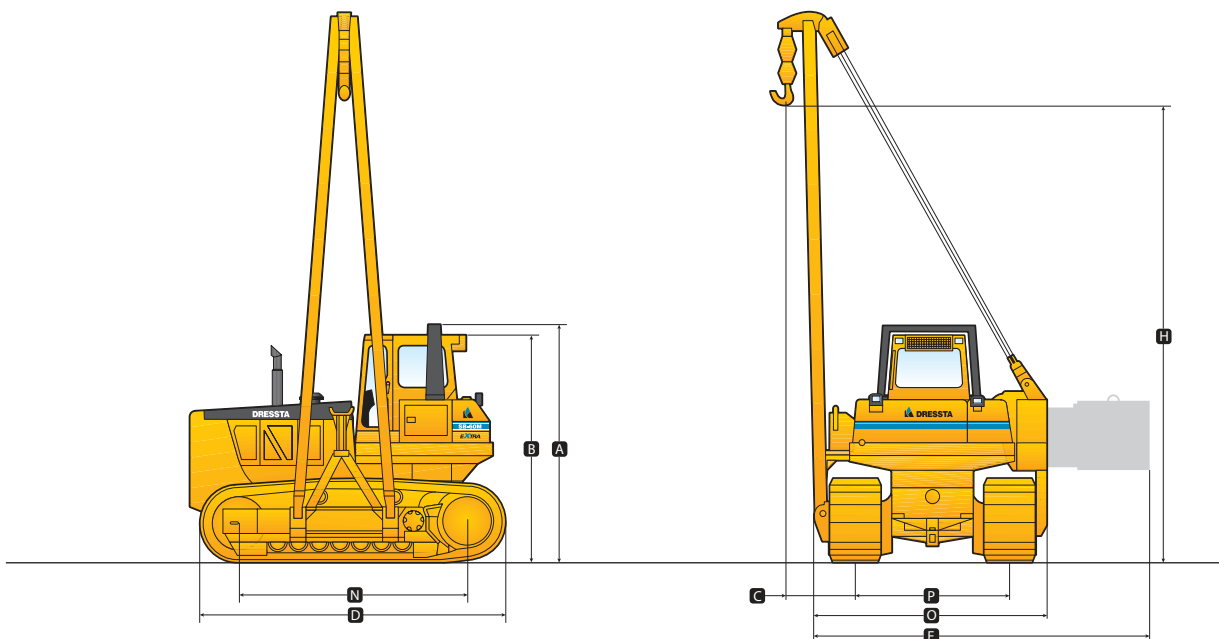
	SB-30M Extra	SB-60M Extra	SB-85M Extra	SB-85R Extra
Suspension	Rigid type			
Tracks	Large deep-heat-treated, sealed, and lubricated track links and through-hardened, sealed, and lubricated rollers for maximum wear resistance			
Track gauge	2 170 mm (7 ft 1.5 in)	2 340 mm (7 ft 8 in)	2 600 mm (8 ft 6 in)	2 600 mm (8 ft 6 in)
Track shoe width	610 mm (24 in)	762 mm (30 in)	915 mm (36 in)	915 mm (36 in)
Chain and rollers	Sealed and lubricated			
Shoes, each side	43	41	46	46
Track rollers, each side	8			
Track length on ground	3 050 mm (10 ft)	3 520 mm (11 ft 7 in)	3 985 mm (13 ft 1 in)	3 985 mm (13 ft 1 in)
Ground contact area	37 000 cm <sup>2</sup> (5,729 sq in)	53 645 cm <sup>2</sup> (8,315 sq in)	72 925 cm <sup>2</sup> (11,503 sq in)	72 925 cm <sup>2</sup> (11,303 sq in)
Ground pressure	73.5 kPa (10.7 psi)	96.85 kPa (13.6 psi)	89,7 kPa (12.6 psi)	91.7 kPa (12.88 psi)
Track pitch	203,2 mm (8 in)	250 mm (9.86 in)	250 mm (9.86 in)	250 mm (9.86 in)
Sprocket sements, each side	1			

## OPERATING WEIGHTS

	SB-30M Extra	SB-60M Extra	SB-85M Extra	SB-85R Extra
Base Weight with standard equipment, standard boom, Cab ROPS/FOPS, full fuel tank, and 79-kg [175 lb] operator)	27 580 kg (60,803 lb)	51 280 kg (113,052 lb)	64 480 kg (142,153 lb)	65 580 kg (144,579 lb)

## MACHINE DIMENSIONS

	SB-30M Extra	SB-60M Extra	SB-85M Extra	SB-85R Extra
<b>A</b> Overall height -ROPS	3 520 mm (11 ft 7 in)	3 910 mm (12 ft 10 in)	4 000 mm (13 ft 1 in)	4100 mm (13 ft 5 in)
<b>B</b> Overall Height -FOPS cab	3 420 mm (11 ft 3 in)	3 800 mm (12 ft 6 in)	3 840 mm (12 ft 7 in)	3 940 mm (12 ft 11 in)
<b>C</b> Overhang, min	1 220 mm (4 ft)	1 220 mm (4 ft)	1 220 mm (4 ft)	1 220 mm (4 ft)
<b>D</b> Operating length	4 400 mm (14 ft 5 in)	5 460 mm (17 ft 11 in)	5 770 mm (18 ft 11 in)	5770 mm (18 ft 11 in)
<b>E</b> Width of tractor (counterweight extende)	4 650 mm (15 ft 3 in)	5 490 mm (18 ft)	5 860 mm (19 ft 3 in)	5 860 mm (19 ft 3 in)
<b>H</b> Hook height, max	5550 mm (18 ft 2.5 in)	6 500 mm (21 ft 4 in)	7 440 mm (24 ft 5 in)	7 440 mm (24 ft 5 in)
<b>N</b> Lentgth track on ground	3 050 mm (10 ft)	3 520 mm (11 ft 7 in)	3 980 mm (13 ft 1 in)	3 980 mm (13 ft 1 in)
<b>O</b> Width of tractor counterweight / boom removed	3 210 mm (10 ft 6 in)	3 600 mm (11 ft 10 in)	4 100 mm (13 ft 5 in)	4 100 mm (13 ft 5 in)
<b>P</b> Track gauge	2 160 mm (7 ft 1 in)	2 340 mm (7 ft 8 in)	2 600 mm (8 ft 6 in)	2 600 mm (8 ft 6 in)

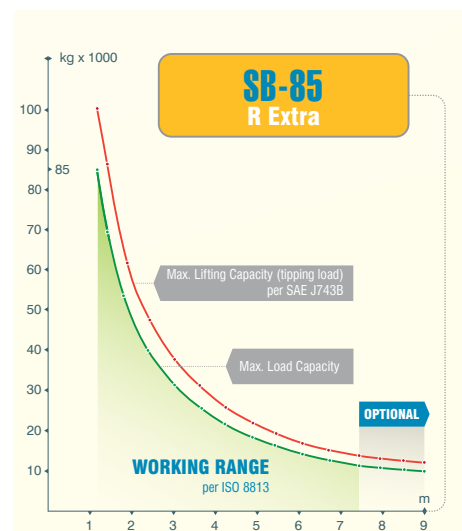
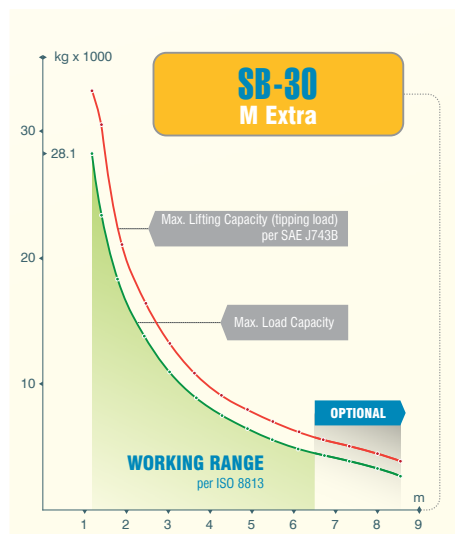


# PIPELAYING EQUIPMENT

	SB-30M Extra	SB-60M Extra	SB-85M Extra	SB-85R Extra
Boom length std/optional	6 500 mm / 8,500 mm (21 ft 4 in / 27 ft 9 in)	7 315 mm / 9,000 mm (24 ft / 29 ft 6 in)	7 315 mm / 9,000 mm (24 ft / 29 ft 6 in)	7 315 mm / 9,000 mm (24 ft / 29 ft 6 in)
Counterweights	Adjustable hydraulically controlled 2 pcs / 4 380 kg (9,656 lb)	Adjustable hydraulically controlled 4pcs / 9 360 kg (20,635 lb)	Adjustable hydraulically controlled 4pcs / 9 360 kg (20,635 lb)	Adjustable hydraulically controlled 4pcs / 9360 kg (20,635 lb)
Live power	continuous power to pipelayer winches independent of torque converter			
Winch transmission	operated independently or simultaneously sliding gear planetary, 2 speed for raising ,2 speed for lowering			
Drums diameter (hook &boom)	340 mm (13.4 in) / 340 mm (13.4 in)	359 mm (14.1 in) / 359 mm (14.1 in)	338 mm (13.3 in) / 338 mm (13.3 in)	338 mm (13.3 in) / 338 mm (13.3 in)
Wire rope length (inside flanges) hook/boom	55 m (180 ft 5 in) / 45 m (147 ft 7 in)	92 m (301 ft 10 in) / 78 m (255 ft 11 in)	106 m (347 ft 9 in) / 74 m (242 ft 9 in)	108 m (354 ft 4 in) / 74 m (242 ft 9 in)
Wire rope diameter	19 mm (3/4 in)	19 mm (3/4 in)	22.2 mm (7/8 in)	22.2 mm (7/8 in)
Hook speed:				
raise 1st	11.7 m/min (38.4 ft/min)	10.5 m/min (34.4 ft/min)	6.7 m/min (22 ft/min)	11.3 m/min (37.4 ft/min)
raise 2nd	21.3 m/min (70 ft/min)	19.8 m/min (65 ft/min)	14.8 m/min (48.5 ft/min)	18.7 m/min (61.4 ft/min)
lower 1st	11.7 m/min (38.4 ft/min)	10.2 m/min (33,5 ft/min)	9.1 m/min (30 ft/min)	11.1 m/min (36.4 ft/min)
lower 2nd	27.1 m/min (88.9 ft/min)	19.4 m/min (63.6 ft/min)	20.1 m/min (65.9 ft/min)	20.4 m/min (66.9 ft/min)
Max lifting capacity per SAE 743B	33 t	72 t	100 t	100 t
Max working capacity on radius 1.22 m	28.1	61.2	85	85

# LIFTING CHARTS

## STD VERSION



# STANDARD EQUIPMENT SB-30 SB-60 SB-85

## ENGINE

**SB-30M Extra:** Cummins QSB6.7, Tier 3/EU Stage IIIA, emission certified, turbocharged, direct start, direct injection, 188 HP (140 kW)

**SB-60M Extra:** Cummins QSM11, Tier 3/EU Stage IIIA, emission certified, turbocharged, direct start, direct injection, 310 HP (231 kW)

**SB-85M Extra:** Cummins QSX15, Tier 3/EU Stage IIIA, emission certified, turbocharged, direct start, direct injection, 370 HP (276 kW)

**SB-85R Extra:** Cummins QSX15, Tier 4/EU Stage IV, emission certified, turbocharged, high pressure injection (HPI), 370 HP (276 kW)

Antifreeze, -37°C (-34°F)

Exhaust pipe extension

Filters, drive train system, hydraulic system, engine fuel system

Strainers, fuel and hydraulic tanks

Water separator, fuel system

### SB-30M Extra / SB-60M Extra / 85M Extra:

Air cleaner, dry type w/exhaust aspirated primary and safety elements and service indicator

Cooling module; includes radiator, transmission oil cooler, hydraulic oil cooler, charge air cooler; isolation mounted

Muffler, under engine hood, insulated

**SB-30M Extra:** Fan, blower

**SB-60M Extra / 85M Extra:** Fan, hydraulically driven

Coolant filter conditioner

**SB-85M Extra / 85R Extra:** Filters, oil, full flow with replaceable elements

**SB-85R Extra:** Air cleaner, Cummins Filtration Direct Flow, dry type, precleaner and electronic service indicator

Cooling module, includes radiator, transmission oil cooler, fuel cooler, hydraulic oil / fan drive oil cooler, charge air cooler, isolation mounted

Fan, hydraulically driven, suction type, variable speed

**SB-30M Extra / 60M Extra:** Filter, oil, spin -on type

## DRIVETRAIN

Torque converter, single stage

Transmission, power shift, 3 speeds forward, 3 reverse combined

with 2 speed steering provides 6 speeds forward, 6 reverse

Steering, planetary type, 2 speed, left hand single lever control (joystick)

Brakes, wet, multiple disc, closed type, spring applied hydraulically released

Decelerator - right foot pedal, and brake - center foot pedal

**SB-60M Extra:** Diagnostic center for power train pressures

## OPERATOR'S ENVIRONMENT:

Cab, 6-sided, w/sound suppression, air recirculation system, lights: 2 front and 1 side (LH), wipers w/washers, dome light, inside mirror, roof window and emergency hatch (approved according to FOPS - SAE J231)

Seat, deluxe, air suspension type, fabric cover, adjustable with arm rest

Seat belt (SAE J386) - 3" wide, retractable

Sun visor for front cab window

Tools compartment

## BOOM

Boom kickout, uppermost position

Brake, hook lowering, auxiliary

Emergency hook lowering system

Load capacity indicator, mechanical, on boom frame

**SB-30M Extra:** Lifting capacity - 33 100 kg (72,972 lb) @ load overhang of 1 220 mm (4') and cwt max extended (per SAE J743b)

Boom, welded type, box-section structure, 'A' shape frame, length 6 500 mm (21'4")

**SB-60M Extra:** Lifting capacity - 72 000 kg (158,731 lb) with counterweights extended (per SAE J743B)

Boom, welded type, box-section structure, 'A' shape frame, length - 7 315 mm (24')

**SB-85M Extra:** Lifting capacity - 100 000 kg (220,460 lb) with counterweights extended (per SAE J743B)

Boom, welded type, box-section structure, 'A' shape frame, length - 7 315 mm (24')

**SB-85R Extra:** Lifting capacity - 100 000 kg (220,460 lb) with counterweights extended (per SAE J743B)

## INSTRUMENTATION

Gauges: fuel level, engine coolant temperature, engine oil pressure, torque converter oil temp., voltmeter, hourmeter, brake lock, emergency hook lowering, joystick control display

Warning lights: air cleaner filter, transmission oil filter, hydraulic oil filter, transmission/clutch oil low pressure, counterweights extended, hook top limit position, boom top limit position

Audible & visual warning system: low engine coolant level, low engine oil pressure, coolant high temperature, hydraulic oil high temperature

## ELECTRICAL

Alarm, back-up

Horn, electric

Light, boom

Lights w/guards, 2 front, 2 rear, tractor mounted

Starting, 24 V

Starting aid - air grid heater - (not for SB-30M Extra)

Receptacle, starting/charging

**SB-30M Extra:** Alternator 70 A

Dual batteries 12 V, 815 CCA, maintenance free

**SB-60M Extra:** Alternator 50 A

Batteries, (4) 12 V, 1920 CCA, maintenance free, cold start

**SB-85M Extra:** Alternator 105 A

Batteries, (4) 12 V, 1920 CCA, maintenance free, cold start

**SB-85R Extra:** Alternator 105 A

Batteries, (4) 12 V, 1920 CCA, maintenance free, cold start

## GUARDS

Guards; crankcase - hinged with front pull hook, fan, transmission

Engine hood, sloped, solid type

Engine side doors, hinged, perforated type

Final drive seal guard

Radiator guard door, two-piece, louvered, hinged

**SB-30M Extra:** Track roller guard

Engine hood, sloped, perforated type

## UNDERCARRIAGE

Track adjusters, hydraulic

Track chain guides, integral

**SB-30M Extra:** Track chain, sealed and lubricated (LTS) with split master link, 43 links

Track frames, 8 roller, 2 160 mm (85") gauge, non-oscillating type, lifespan lubricated rollers & idlers

Track shoes, 610 mm (24") severe service

**SB-60M Extra:** Track chain, sealed and lubricated (LTS) with split master link, 41 links

Track frames, 8 roller, 2 340 mm (92") gauge, non-oscillating type, lifespan lubricated rollers and idlers

Track shoes, 762 mm (30")

**SB-85M Extra:** Track chain, sealed and lubricated (LTS) with split master link, 46 links

Track frames: 8 roller, 2 700 mm (106") gauge, non-oscillating type, lifespan lubricated rollers and idlers

Track shoes, 915 mm (36")

**SB-85R Extra:** Track chain, sealed and lubricated (LTS) with split master link, 46 links

Track frames: 8 roller, 2 700 mm (106") gauge, non-oscillating type, lifespan lubricated rollers and idlers

Track shoes, 915 mm (36")

## OTHER STANDARD EQUIPMENT:

Bumper, front

Drawbar, fixed

Ecological drains for engine oil, radiator coolant and hydraulic oil

Manuals, parts and operator's

Rear access platform

Winch transmission (two separate winches for hook and boom with hydrostatic drive system and planetary transmission)

**SB-30M Extra:** Counterweights, adjustable, hydraulically controlled, 2-block and 2-counterweight frames; total weight extendable - 5 360 kg (11,817 lb)

**SB-60M Extra:** Counterweights, adjustable, hydraulically controlled, 4-block and 2-counterweight frames (total weight extendable - 11 640 kg (25,662 lb))

**SB-85M Extra:** Counterweights, adjustable, hydraulically controlled 4-block and 2-counterweight frames (total weight extendable - 12 350 kg (27,227lb))

**SB-85R Extra:** Counterweights, adjustable, hydraulically controlled 4-block and 2-counterweight frames (total weight extendable - 12 350 kg (27,227lb))

## OPTIONAL EQUIPMENT SB-30 SB-60 SB-85

### WORKING ATTACHMENTS

Hook pulley block limit switch, uppermost position

**SB-30M Extra:** Boom, welded type, box section structure, 'A' shape frame length 6 500 mm (21'4") with electronic load limit indicator

Boom, welded type, box section structure, 'A' shape frame length 8 500 mm (27'9") with or without electronic load limit indicator

**SB-60M Extra:** Boom, welded type, box-section structure length - 7 315 mm (24') with electronic load limit indicator

Boom, welded type, box-section structure length - 9 000 mm (29' 6") with or without electronic load limit indicator

**SB-85M Extra:** Boom, welded type, box-section structure length - 7 315 mm (24') with electronic load limit indicator

Boom, welded type, box-section structure length - 9 000 mm (29' 6") with or without electronic load limit indicator

**SB-85R Extra:** Boom, welded type, box-section structure length - 7 315 mm (24') with electronic load limit indicator

Boom, welded type, box-section structure length - 9 000 mm (29' 6") with or without electronic load limit indicator

### TRACK SHOES

**SB-30M Extra:** 711 mm (28") shoes, severe service

**SB-60M Extra:** 860 mm (34") shoes

### OPERATOR'S ENVIRONMENT

Air conditioner/heater/pressurizer/defroster, underseat mounted, behind roof mounted A/C condenser

Heater/pressurizer/defroster

ROPS, for use with standard Cab

For use with cab:

- AM/FM CD radio
- Lights for cab, 2 rear
- Mirrors, 2 pcs, exterior, cab mounted
- Sun visors (2), additional, for side door window

### GUARDS

**SB-30M Extra:** Transmission and engine crankcase guards, severe service  
Crankcase guard with front pull hook  
Solid hood and perforated side doors

**SB-60M Extra:** Sprocket dirt deflector  
Track roller guards, full length

**SB-85M Extra:** Sprocket, dirt/rock deflector  
Track roller guard  
Engine hood, perforated

**SB-85R Extra:** Sprocket, dirt/rock deflector  
Track roller guard  
Engine hood, perforated

### ADDITIONAL OPTIONS

Beacon light, rotating

Inspection lamp, 24 V, portable, with 6 m (20') cable

Light, winch

Starting/charging receptacle plug assembly with cable (required to jump start or charge batteries)

Vandalism protection

Maintenance tool kit, 17 items in a metal box

1000 h maintenance package (filters)

1500 h maintenance package (filters)

2000 h maintenance package (filters)

**SB-30M Extra:** Batteries, cold start, (2) 12 V, 960 CCA

**SB-60M Extra:** Rubber protection stripes, bolted, For use with standard 7 315 mm or for use with 9 000 mm boom

### EXPORT PACKING

Export packing, drive-on/drive-off, machine on the trailer

Export packing, drive-on/drive-off, machine on the railway wagon



Specifications may change from time to time and this brochure may not reflect the latest specifications. Photographs in this brochure may not reflect market configuration. Please consult your dealer to confirm specifications and configurations.



Dressta encourages safe worksites.  
Please consult operator's manual before use of any Dressta equipment.



---

[info@dressta.com](mailto:info@dressta.com)  
[www.dressta.com](http://www.dressta.com)

**DR-PB-SB30/60/85-T3/T4F-WW-A4-20022019-ENG**

